



Product Brochure

We have developed a complete package of innovative products that make it easy for you

Our innovative product range means we can provide you with a tailored package of market leading products. CTA products are all standards compliant offering the highest safety ratings, with patented designs and industry leading warranties. At CTA we stand behind everything we do and can guarantee your project will be delivered to specification, to standard and to sign off.

Product and Service Guarantee

When you choose or specify a CTA product, your decision is supported by industry professionals, trades people and thousands of others who insist on premium quality and superior products. This means that in the unlikely event a problem occurs, you can remain confident that CTA will be here to answer that claim. We are so confident in the quality of our products that we offer up to 10 years manufacturer's warranty, the highest in the industry.

20

YEARS OF
OPERATION

1ST

IN THE INDUSTRY
TO BE ISO
ACCREDITED

AUS

AUSTRALIAN
MANUFACTURING

6

LOCATIONS
ACROSS
AUSTRALIA

An Established Company with a Large, Dedicated and Experienced Team

We strive to provide exceptional customer service and to continually exceed our customers' expectations. With years of experience and expert knowledge, our clients trust us to have the experience required to deliver a successful project. With offices in four states and one of the largest and most experienced install teams in the country, you can be confident knowing CTA has the skills and manpower to ensure your project is completed on time and to the highest possible standard. Our clients included SME's; Government entities, both local and federal; tier one builders; and large multinationals.

The business operates from 3 production facilities in Melbourne - located in Tullamarine, Keilor Park and Truganina with a combined footprint of over 4,500 Square meters. Interstate warehousing, distribution and installation capabilities are also located in Boondall Queensland, Rydalmere NSW and Cockburn in WA. Combined, the CTA Group operates from over 6,000 Square meters of warehousing space and employees over 80 people nationally. Our export markets include the United Kingdom, UAE - Dubai and Qatar, Hong Kong and Norway.

The CTA Difference

CTA have been involved in providing tactile guidance products and turn-key finishes in major projects in Australia and internationally, always to specification, to standard and to sign-off

- Melbourne, Sydney, Brisbane, Perth and Cairns Airports
- Melbourne Smart Bus Project
- Brisbane City Glider Bus Project
- ANZ, NAB and Commonwealth Bank Head Quarters
- Hamer Hall and Sydney Myer Music Bowl Melbourne
- Adelaide Oval Redevelopment
- Dubai Metro UAE (Numerous platforms and access ways)
- Norway railway stations (Numerous platforms and access ways)
- Many regional train stations in Victoria
- Adelaide Metro Train Stations
- Adelaide Glenelg Tram extension
- Sydney and Gold Coast Light Rail projects
- Advanced Engineering Building University of Queensland
- Monash University Neuroscience Centre Melbourne
- Monash University Green Chemical Futures Melbourne
- RMIT University Swanston Academic Building (full fit-out)
- Melbourne and Brisbane Women's Hospitals
- Skycity Darwin, Jupiters, Crown Perth (Burswood) and Crown Melbourne casinos
- The University of Sydney
- Deakin University Geelong, Waurn Ponds and Burwood Campuses
- Masters Home Improvement Stores Queensland, NSW and Victoria
- Qatar Public School program
- New Auditorium Project at Chong Yuet Ming Amenities Centre Hong Kong
- Midfield Concourse Hong Kong Airport
- Barrier-Free Access Upgrade for North District Government Offices Hong Kong
- Innovation Tower, The Polytechnic University Hong Kong
- Museum of the Arts Hong Kong

TACTILE GUIDANCE SYSTEMS



CobbleTac®

- CobbleTac® Porcelain
- CobbleTac® Precast
- GraniTac®

SureSteel®

- SureSteel®
- SureSteel® Select
- SureSteel® EnviroStud®
- SureSteel® Directional
- SureSteel® Plates
- SureSteel® Transition Plates

Austact® Rail Stud

- Austact® Lock Stud
- Austact® Carborundum Lock Stud

PolyGuide®

- PolyStud®
- PolyBlade®
- PolyCap®
- RhinoTac® Accessible Tactile
- PolyPad®
- PolyTile®

SAFETY STAIR EDGING



ProStep®

- ProStep® Classic
- ProStep® Square
- ProStep® Twin
- ProStep® Carpet

HighLight®

- HighLight® 5 Bar
- HighLight® 4 Bar
- HighLight® 3 Bar

PosiTread®

- PosiTread® Ridge
- PosiTread® FineLine
- PosiTread® Channel
- PosiTread® Groove

SureGrip®

- SureGrip® Galvanised Metal
- SureGrip® Extruded Fibreglass
- SureGrip® Plates

SafeLine®

- SafeLine® Twin
- SafeLine® Step
- SafeLine® Tape

URBAN FURNISHING



Bike Racks

- Inverted U
- Hold Rail
- Coat Hanger
- Cantilevered
- Wall Mounted
- Horizontal Wall Mounted
- Dual Free Standing

Skateboard Deterrents

- Dome
- Cylinder
- Nosed
- Fins

Car Park & Basement Fitouts

- Wheel Stops
- Height Clearance Bars
- Convex Mirror

Speed Humps

- Rubber
- Heavy Duty Metal
- Portable

Speed Humps

- Rubber
- Heavy Duty Metal
- Portable

Wall Protection

- Corner Guards
- Dock Bumpers

MOBILITY & ACCESS AIDS



Brail Signs

Skateboard Deterrents

- Dome
- Cylinder
- Nosed
- Fins

Glazed Decals

FLOOR COVERINGS



StepRight® Matting

- Entrance Matting
- StepRight® Ultra
- StepRight® Modular Matting

Entrymaster® Matting

Duraclean® Matting

Fordex® Safety Flooring

TACTILE GUIDANCE SYSTEMS



TGSI RANGE

CobbleTac® Inlaid

CobbleTac® Porcelain
CobbleTac® Precast
GraniTac®

SureSteel®

SureSteel®
SureSteel® Select
SureSteel® EnviroStud®
SureSteel® Directional
SureSteel® Plates
SureSteel® Transition Plates

PolyGuide®

PolyStud®
PolyBlade®
PolyCap®
RhinoTac® Accessible Tactile
PolyPad®
PolyTile®

Austact® Rail Stud

Austact® Lock Stud
Austact® Carborundum Lock Stud

CobbleTac® Natural Tactile Indicator Pavers

CobbleTac® tactile pavers are manufactured from **Porcelain**, fibre reinforced **Precast Concrete** or **Granite** and **Bluestone**. CobbleTac® tactile pavers are a range of integrated inlaid tiles designed to be installed flush with the substrate using normal tiling/paving practices. They integrate perfectly with the surrounding area, and are particularly suited to heavy traffic in public areas such as pedestrian crossings, train stations and public squares.

Applications

CobbleTac® tactile indicators can be used on internal and external applications. Suitable for use on concrete, bitumen, tiled or paved surfaces and most other substrates that can be recessed.



CobbleTac®



HC108CT

CobbleTac® Porcelain

Integrated Porcelain Inlaid Tactile Indicators

Key Features

- Hazard & Directional Options
- 300x300x10+5mm Porcelain Tiles
- P5 / R12 Slip Resistance
- 10 Year Warranty
- VicRoads & MainRoads Approved

Colour Range



CPL124CT

CobbleTac® Precast

Integrated Fibre Reinforced Concrete Inlaid Tactile Indicators

Key Features

- Hazard & Directional Options
- 300x300mm Precast Concrete Tiles
- 40mm or 60mm Deep Base
- P5 Slip Resistance
- 10 Year Warranty

Colour Range



HGT155CT

GraniTac®

Integrated Granite Inlaid Tactile Indicators

Key Features

- Hazard & Directional Options
- 300x300mm Granite Tiles
- 20mm Deep Base
- P5 Slip Resistance
- 10 Year Warranty

Colour Range



HGTS135CT

GraniTac® Select

Integrated Granite Inlaid Tactile Indicators

Key Features

- Hazard & Directional Options
- 300x300mm Granite Tiles
- 20mm or 40mm Deep Base
- P5 Slip Resistance
- 10 Year Warranty

Colour Range



SureSteel® Architectural Tactile Indicators

The CTA SureSteel® range of stainless steel tactile indicators offers the highest quality tactile combined with stunning appearance and market-leading ease of installation.

SureSteel® is available in a range of styles to suit your aesthetic and safety requirements.

The **Classic** range offers a concentric ring top, and smooth or stepped side face.

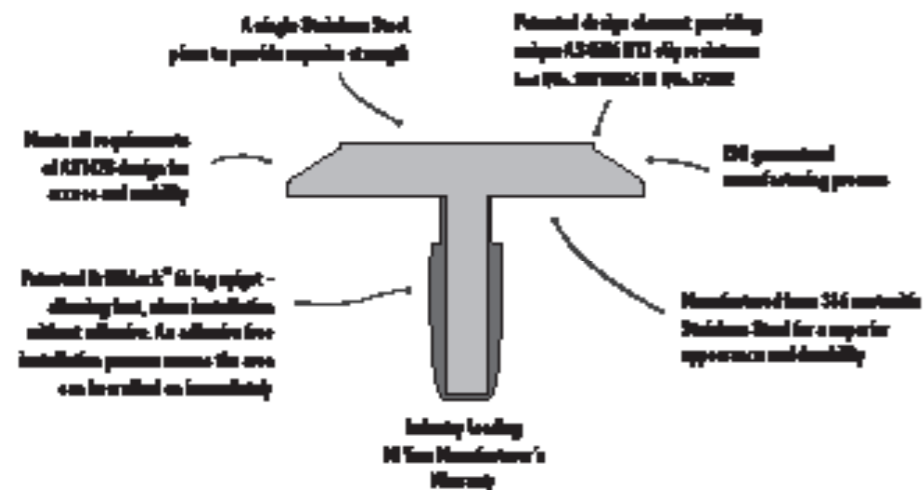
The **Special** range combines SureSteel® quality with anodised black, brass or aluminium finishes.

The SureSteel® **Select** range introduces colour to tactile ground surface indicators, without compromising the high levels of compliance, safety and durability that stainless steel provides. Select comes with coloured poly top or side options, which offers specifiers a greater range of colours to meet luminance requirements on a larger number of substrates, all while retaining the strength of stainless steel.

SureSteel® utilises CTA's patented Drill&Lock installation method, eliminating the need for messy adhesives, reducing both installation time and cost, and allows the area to be open to pedestrian traffic immediately.



Superior Design Makes SureSteel® Tactiles The Specifier's Choice



SureSteel® Architectural



CRS009

SureSteel® Classic Smooth

Discrete Architectural Stainless Steel Tactile Indicators

Key Features

- 316 Stainless Steel, Brass or Aluminium
- P5 / R13 Slip Resistance
- 10 Year Warranty

Colour Range



CRST006

SureSteel® Classic Stepped

Discrete Architectural Stainless Steel Tactile Indicators

Key Features

- 316 Stainless Steel, Brass or Aluminium
- P5 / R13 Slip Resistance
- 10 Year Warranty

Colour Range



CRPIS006-XXX

SureSteel® Select Polymer Infill

Discrete Architectural Coloured Stainless Steel Tactile Indicators

Key Features

- Hazard & Directional Options
- 316 Marine Stainless Steel
- Designer Colour Range
- P5 / R13 Slip Resistance
- 10 Year Warranty

Colour Range



CRPS007-XXX

SureSteel® Select Polymer Sideskirt

Discrete Architectural Coloured Stainless Steel Tactile Indicators

Key Features

- Hazard & Directional Options
- 316 Marine Stainless Steel
- Designer Colour Range
- P5 / R13 Slip Resistance
- 10 Year Warranty

Colour Range



CIS006-SS-XXX

SureSteel Carborundum Smooth

Discrete Architectural Stainless Steel Tactile Indicators With Carborundum Infill

Key Features

- Hazard & Directional Options
- 316 Marine Stainless Steel
- P5 / R13 Slip Resistance
- 10 Year Warranty
- Ideal For External Applications

Colour Range



CIS7006-SS-XXX

SureSteel Carborundum Stepped

Discrete Architectural Stainless Steel Tactile Indicators With Carborundum Infill

Key Features

- Hazard & Directional Options
- 316 Marine Stainless Steel
- P5 / R13 Slip Resistance
- 10 Year Warranty
- Ideal For External Applications

Colour Range



SureSteel® Architectural



RHLS002 (SLIDER)

SureSteel® Directional

Discrete Architectural Stainless Steel Directional Tactile Indicators

Key Features

- P5 Slip Resistance
- SureSteel® Select & Carb Variations
- 10 Year Warranty
- 316 Marine Grade Stainless Steel
- Standard & Stepped Sideface

Colour Range



CRPIS065-XXX

SureSteel® Plates Select

Architectural Stainless Steel Tactile Indicator Plates

Key Features

- Hazard & Directional Options
- 316 Marine Stainless Steel
- SureSteel® Select Colours Available
- P5 / R13 Slip Resistance
- 10 Year Warranty

Colour Range



CRS005

SureSteel® Plates Classic

Architectural Stainless Steel Tactile Indicator Plates

Key Features

- Hazard & Directional Options
- 316 Marine Stainless Steel
- SureSteel® Select Colours Available
- P5 / R13 Slip Resistance
- 10 Year Warranty

Colour Range



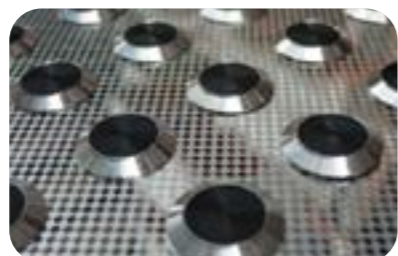
CRTPS005-AL

SureSteel® Transition Plates

Architectural Stainless Steel Escalator Transition Tactile Indicator Plates

Key Features

- 316 Marine Stainless Steel
- SureSteel® Select Colours Available
- Peel&Stick Installation Technology
- P5 / R13 Slip Resistance
- 10 Year Warranty



CRTPS005-CHQ

SureSteel® Transition Plates

Architectural Stainless Steel Escalator Transition Tactile Indicator Plates

Key Features

- 316 Marine Stainless Steel
- SureSteel® Select Colours Available
- Peel&Stick Installation Technology
- P5 / R13 Slip Resistance
- 10 Year Warranty



PolyGuide® Tactile Indicators

The PolyGuide® range of tactile indicators includes integrated **rubber pads**, **plastic peel&stick**, **fibre reinforced polymer** and individual **plastic studs**. PolyGuide® offers a multitude of colour options and install methods for all substrates.

PolyCap® is the perfect product to achieve the same aesthetic and range of colours at a reduced cost.

PolyStud® is engineered and purpose built tough, to withstand extreme point loading and side impact. It is long lasting, resistant to heavy traffic, maintenance machinery and abuse.

PolyBlade® is suited to a wide range of situations and is easily installed onto most substrates using a saw-cut process.

PolyTile® a simple peel and stick tile which can be applied to almost any internal walkway, stairs or ramps to provide immediate compliance to the Australian Standards AS1428

PolyPad® is flexible and can be manipulated to suit undulating surfaces without compromising strength and durability.

RhinoTac® Accessible Tactile is a heavy duty tactile with R13 slip resistant rating, which will not lift, peel or crack

Austact® Rail Tactile Indicators

The Austact® Lock Stud range of tactile indicators is manufactured from a high performance polymer material that is known for its exceptional UV resistance, high tensile strength and extreme abrasion/wear resistance, the Austact® Lock Stud has a patented spigot design, that locks out moisture and provides exceptional vertical pull-out strength, in excess of 80kgs, all without the need for adhesive.

The textured surface of the Austact® Lock Stud provides an R11/P5 slip resistance for the life of the product. Making it suitable for internal as well as external applications. The Austact® Lock Stud is also available in an R13 rated carborundum insert for additional anti-slip in extreme traffic conditions.

Austact® tactile guidance products are available in hazard and directional options.



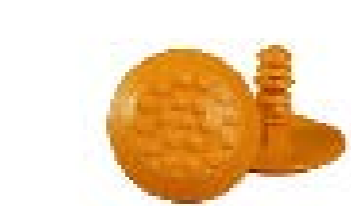
Installation

CTA's PolyGuide® range is designed for easy installation with options of retention fit spigots, blades, Peel&Stick tiles and installation over the substrate using adhesive and mechanical fixings for enhanced durability.

PolyGuides® retention fit spigots and blades are installed into pre-drilled holes in the substrate without the need for adhesive.

PolyGuides® Peel&Stick installation system is as easy as laying out the tactiles, peeling off the adhesive back and pressing onto the substrate.

PolyGuides® more heavy duty installation uses adhesive and mechanical fixings via 8 screw holes, this ensures the tiles will not lift.



TA20-108

Austact® Studded Lockstud
Patented Discrete Plastic Tactile Indicator Lock Studs

Key Features

- P5 / R11 Slip Resistance
- Hazard & Directional Options
- Adhesive Free Installation
- Patented Spigot Locks Out Moisture
- UV Resistant Polymers

Colour Range



TSPC-112

Austact® Carborundum
Patented Discrete Plastic and Carborundum Tactile Indicator Lock Studs

Key Features

- R13 Slip Resistance
- Adhesive Free Installation
- Patented Spigot Locks Out Moisture
- Patented Locking Carborundum Insert
- UV Resistant Polymers

Colour Range



TSPC-112

PolyCap®
Discrete Steel Capped Polymer Tactile Indicator Studs

Key Features

- Adhesive Free Installation
- P5 Slip Resistance
- 2 Year Warranty
- Manufactured Using Engineered Polymers

Colour Range



PTH-XXX

PolyTile®
Peel&Stick Integrated Plastic Tactile Indicator Tiles

Key Features

- Hazard & Directional Options
- Peel&Stick Installation Technology
- 300x300 Polymer Tile
- Engineering Grade Polymers
- UV Resistant
- 2 Year Warranty
- P5 Slip Resistance

Colour Range



TSS002-PP-160

PolyStud®
Discrete Polymer Tactile Indicator Studs

Key Features

- Adhesive Free Installation
- P5 Slip Resistance
- 2 Year Warranty
- Manufactured Using Engineered Polymers

Colour Range



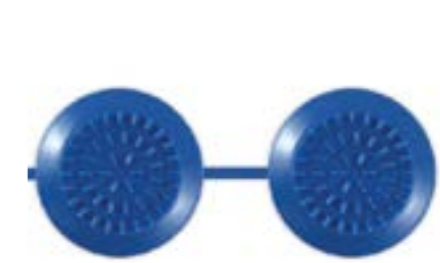
HPP128CT-54

PolyPad®
Retro-fit Integrated Polymeric Inlaid Tactile Indicator Pads

Key Features

- Hazard & Directional Options
- UV Stabilised
- Easily Cut With A Knife
- 2 Year Warranty
- Suitable For External Use
- P5 Slip Resistance
- VicRoads & MainRoads Approved

Colour Range



PB135H-15

PolyBlade®
Discrete Bladed Polymer Tactile Indicator Blades

Key Features

- Hazard & Directional Options
- 10 / 15mm Blade Options
- 2 Year Warranty
- P5 Slip Resistance

Colour Range



PRTH108-18

RhinoTac® Accessible Tactile
Integrated Fibre Reinforced Tactile Indicator Tiles

Key Features

- Hazard & Directional Options
- P5 / R12 Slip Resistance
- Engineered Plastic Polymer
- Impact & Wear Resistant Formula
- UV Resistant Polymers
- Anti Vandal Fixings
- VicRoads & MainRoads Approved

Colour Range





STAIR NOSING

STAIR EDGING RANGE

Stair Nosing

Stair nosing's go hand in hand with tactile indicator's in order to meet AS1428 compliance specifications.

CTA stocks hundreds of stair nosing variants in order to give you the options you need to meet your compliance requirements whilst adhering to environmental aesthetics.

CTA 20 years of experience dealing with compliance to AS1428, is the trusted way.

ProStep® Premium

ProStep® Classic
ProStep® Square
ProStep® Twin
ProStep® Carpet

HiLight® Heavy Duty

HiLight® 5 Bar
HiLight® 4 Bar
HiLight® 3 Bar

PosiTread® Architectural

PosiTread® Ridge
PosiTread® FineLine
PosiTread® Channel
PosiTread® Groove

IndusTread Heavy Duty

IndusTread Galvanised Metal
IndusTread Extruded Fibreglass
IndusTread Plates

SafeLine® Low Profile

SafeLine® Twin
SafeLine® Step
SafeLine® Tape

ProStep® Premium

Designed and manufactured as an attractive, durable stair edging for a variety of applications, it is particularly suited to heavy traffic areas. The range consists of five purpose-designed edgings, namely **Classic**, **Square**, **Twin**, **Carpet** and **Inlaid**. All use the ProStep® Insert System, comprising of P4 rated rubber/aluminium or P5 rated Carborundum inserts, available in six colours or our new photo-luminescence carborundum combo strip inserts. ProStep® is the best option when you need a good looking, hard wearing stair edging that meets all relevant Australian Standards and the latest NCC requirements.

Key Features

- Natural Silver Or Black
- Secure and Discrete Fixing



Installation

ProStep® is supplied to length, pre-drilled with screws and PSA backed insert, ready for installation

Colour Range



ProStep®

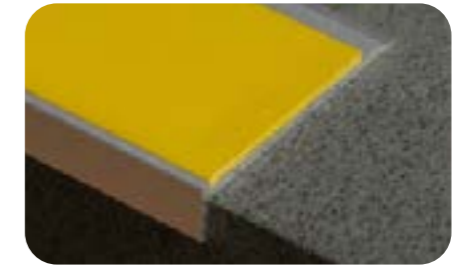
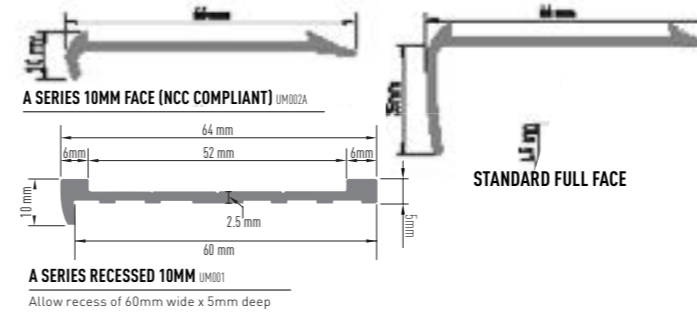


UM002A-SNPI-112

ProStep® Classic

Streamlined Aluminium Stair Edging

- Stream lined appearance,
- Simple installation
- Concealed fixing points
- Available in a choice of 6 rubber (P4) 3 Carborundum colours
- Conforms Australian standards
- Available in A Series to meet the NCC requirements.

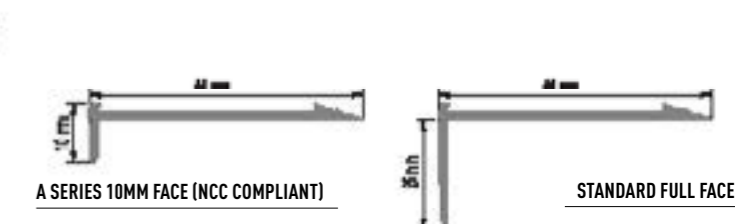


UM009A-SNPI-112

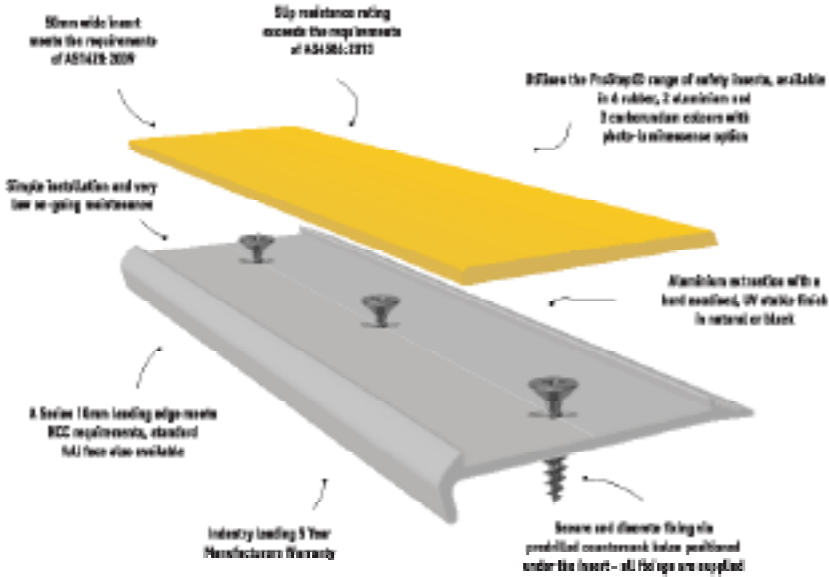
ProStep® Square

Square Nosed Aluminium Stair Edging

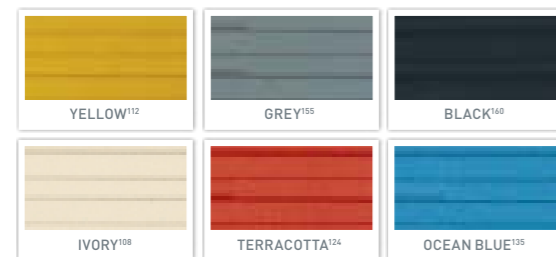
- Stream lined appearance,
- Simple installation
- Concealed fixing points
- Available in a choice of 6 rubber (P4) 3 Carborundum colours
- Conforms Australian standards
- Available in A Series to meet the NCC requirements.



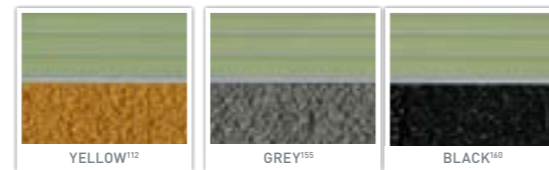
ProStep® Safety Insert System



Ridge Inserts - SNPI-ART



Egress Inserts - SNCI-PL



FineLine Inserts - SNPI-RIP



Carborundum Inserts - SNCI

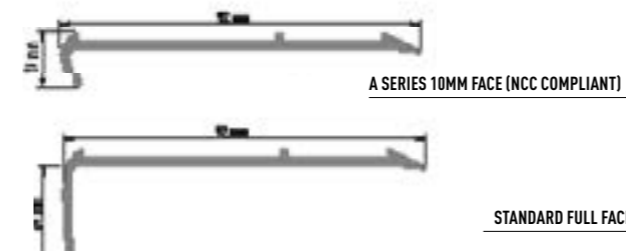


UM004A-SNPI-112

ProStep® Twin

Dual Insert Aluminium Stair Edging

- Provides better concealment of worn or broken stair edges
- Easier installation and increased durability on broken stair edges
- Greater surface area for the elderly
- Available in 5 colours
- Includes the appearance, safety, installation and durability features of ProStep® Classic
- Conforms to all relevant safety and

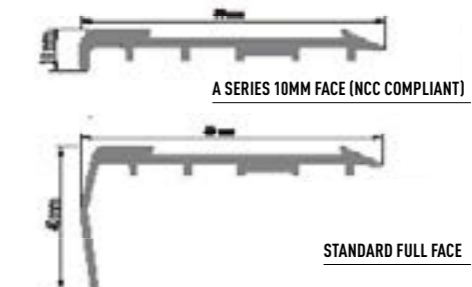


UM003A-SNPI-112

ProStep® Carpet

Aluminium Stair Edging For Carpet

- Quicker, easier installation onto stairs with thick carpet pile and/or underlayment
- Improved safety and durability in carpeted areas
- Includes all the features of the ProStep® range of stair safety inserts.
- Conforms to all relevant safety and public access standards
- Available in A Series to meet the NCC

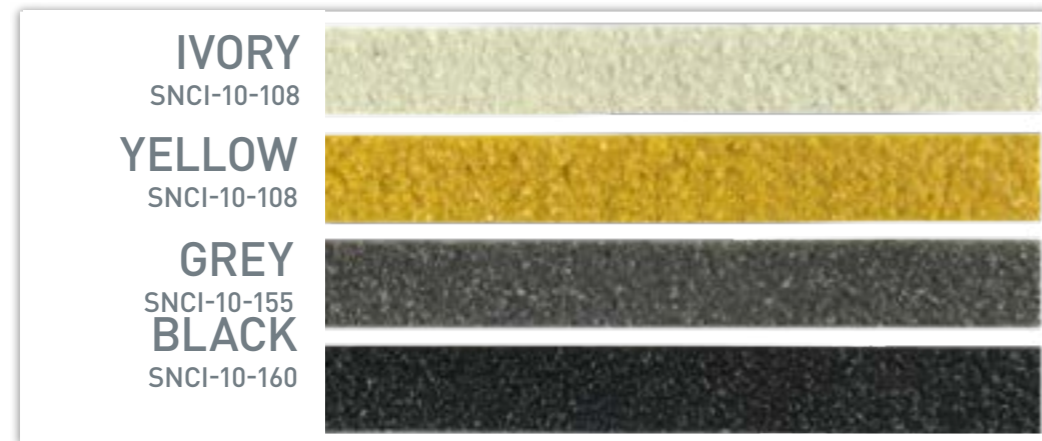


HiLight® Heavy Duty

CTA's HiLight® range of ribbed safety stair edging combines premium performance and aesthetics with maximum flexibility. Designed for high traffic situations, this range will add flair to any public area where style choices are important. HiLight® Provides the highest level of slip resistance, with an extremely high P5 rating. The carborundum inserts can be used in any colour combination. HiLight® is available in **FiveBar**, **FourBar** and **ThreeBar** variants and in surface mount, recess and inlaid options. HiLight® is available in natural silver and anodised black finishes.



Colour Range

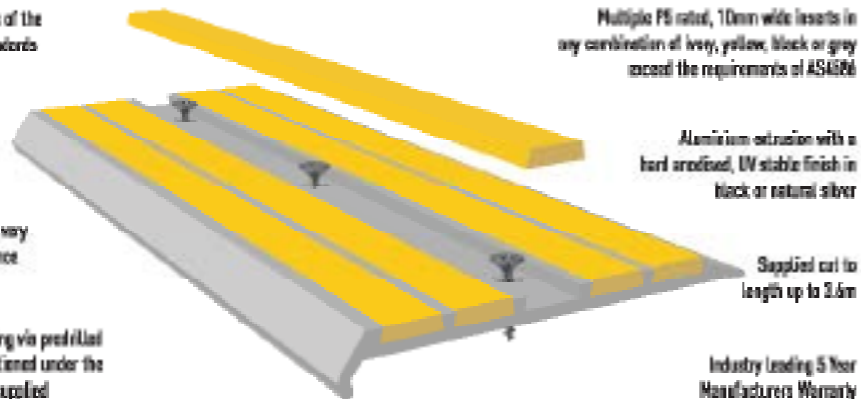


Conforms to all aspects of the relevant Australian standards

10mm high face meets NCC requirements

Simple installation and very low on-going maintenance

Secure and discrete fixing via predrilled countersunk holes positioned under the insert - all screws are supplied

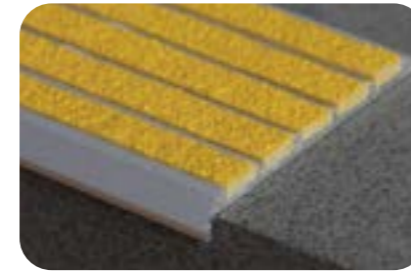


Multiple P5 rated, 10mm wide inserts in any combination of ivory, yellow, black or grey exceed the requirements of AS4686

Aluminium extrusion with a hard anodised, UV stable finish in black or natural silver

Supplied cut to length up to 3.6m

Industry Leading 5 Year Manufacturers Warranty



UM011A-SNCI-112

HiLight® FiveBar

Key Features

- Easy to install with no fuss - ideal for DIY applications
- Provide an P5 safety rating, the highest in the industry
- Conforms to all aspects of the relevant safety and public access standards
- Supplied to length up to 3.6m
- Available in 6 colours including hazard, and luminescent
- Meet NCC requirements

Colour Range



SURFACE MOUNT



RECESSED



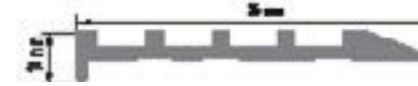
UM020A-SNCI-160

HiLight® FourBar

Key Features

- Easy to install with no fuss - ideal for DIY applications
- Provide an P5 safety rating, the highest in the industry
- Conforms to all aspects of the relevant safety and public access standards
- Supplied to length up to 3.6m
- Available in 6 colours including hazard, and luminescent
- Meet NCC requirements

Colour Range



FOUR BAR



FOUR BAR



UM0072-SNCI-112

HiLight® ThreeBar

Key Features

- Easy to install with no fuss - ideal for DIY applications
- Provide an P5 safety rating, the highest in the industry
- Conforms to all aspects of the relevant safety and public access standards
- Supplied to length up to 3.6m
- Available in 6 colours including hazard, and luminescent
- Meet NCC requirements

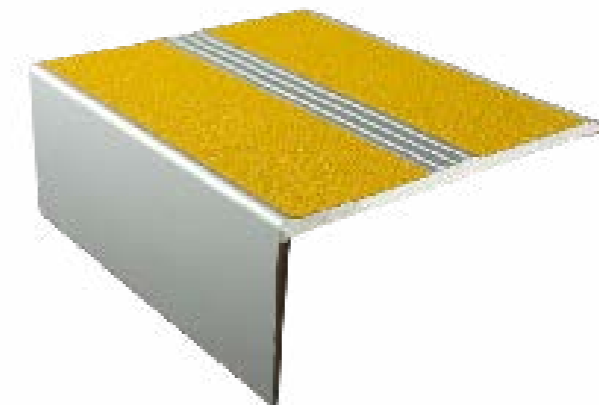
Colour Range



HILIGHT® THREEBAR INLAID



HILIGHT® THREEBAR RECESSED



PosiTread® Architectural

PosiTread® is the first choice for many specifiers when looking for a low profile stair nosing that complies with standards but does not distract from the design.

PosiTread® is available in four different P4 and P5 rated styles, and finished in silver, black or brushed black and anodised aluminium.

Supplied cut to length up to 3.6m, PosiTread® is quick and easy to install with a suitable adhesive.



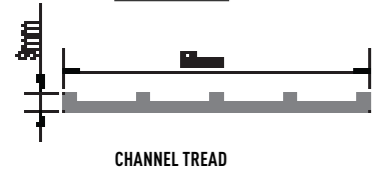
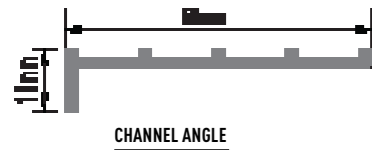
UMD036

PosiTread® Channel

Architectural Safety
Stair Edging
Dimensions

Leading Edge: 10mm (NCC Compliant)
Width: 50mm

Colour Range



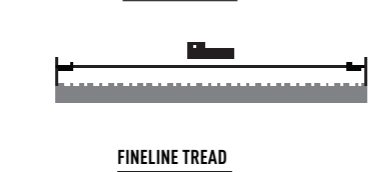
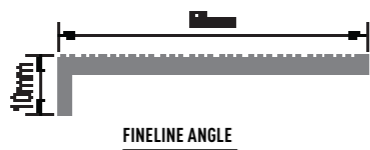
UMD050

PosiTread® FineLine

Architectural Safety
Stair Edging
Dimensions

Leading Edge: 10mm (NCC Compliant)
Width: 50mm

Colour Range



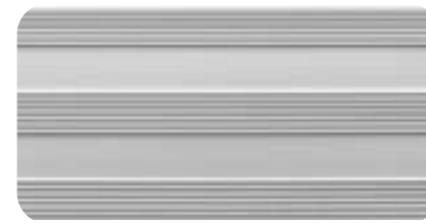
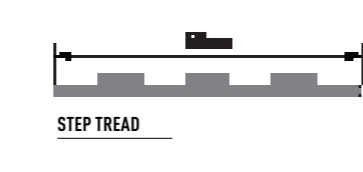
UMD042

PosiTread® Ridge

Architectural Safety
Stair Edging
Dimensions

Leading Edge: 10mm (NCC Compliant)
Width: 50mm

Colour Range



UMD055

PosiTread® Groove

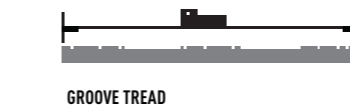
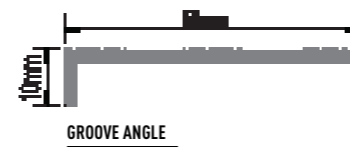
Architectural Safety
Stair Edging
Dimensions

Leading Edge: 10mm (NCC Compliant)
Width: 50mm

Key Features

- Natural Silver Or Black
- Surface Mount and Recess Options
- Suitable for Internal and External Applications
- Four Styles Available
- Finished in Silver, Black or Brushed Black Hard Anodised Aluminium
- Quick and Easy DIY Installation

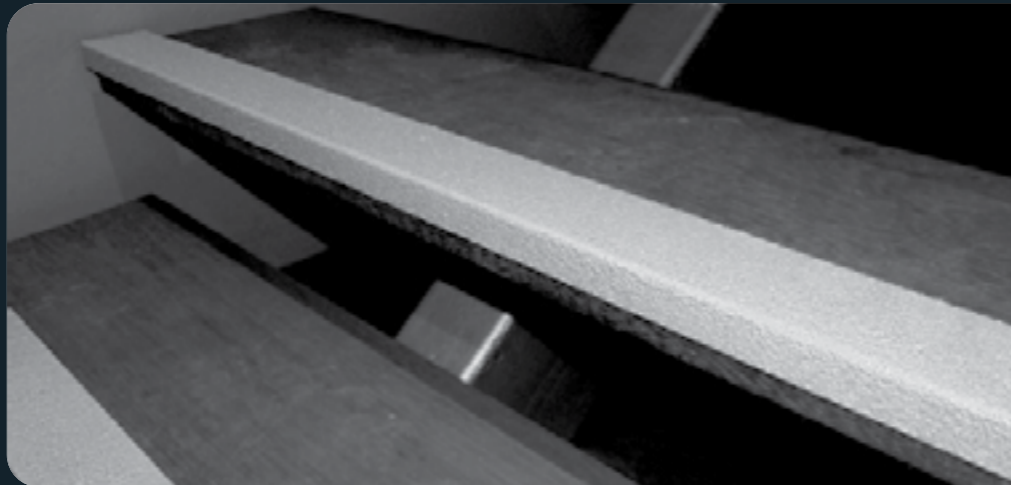
Colour Range



SureGrip® Heavy Duty

CTA Carborundum Modified Safety Stair Treads and Landing Plates are manufactured from folded **galvanised metal** or **extruded fibreglass** lengths and are modified with carborundum grain embedded in an epoxy coating. This combination provides an extremely durable, hard wearing, high friction surface which provides the very best in anti-slip, safety and product longevity.

Carborundum is well known as being the second hardest material to diamond, so CTA Carborundum Modified Safety Stair Treads and Landing Plates are suitable for the most demanding applications. They can be retro-fitted onto concrete, ceramic tiles, timber, carpet (direct stick), ladder rungs, fabricated mesh stair ways and almost any other hard surface.



Key Features

- Designed and Manufactured from Galvanised Metal or Extruded Fibre Glass, Carborundum and High Quality Epoxy to Provide Maximum Durability and Safety.
- Supplied in Standard Sizes and can be Custom Made at No Extra Cost
- Available in 3 Stand out Colours, Including Yellow, Grey and Black
- Finished in Silver, Black or Brushed Black Hard Anodised Aluminium

Applications

Carborundum Modified Safety Stair Treads and Landing Plates are suitable for both internal and external applications such as severe marine environments, areas prone to water or oil spillage (including immersion) and over gradients, such as pedestrian ramps. Also suitable for fast food kitchens, delivery vehicles, airports, public pools, railway stations, tram and bus stations, shopping centres, sporting stadiums, theatres, and aged care facilities and hospitals.

This product is available with either a galvanised metal or extruded fibre glass carrier to satisfy various applications. For example; galvanized metal may not be suitable in applications where exposure to aggressive acids is likely. In this case, fibreglass is recommended.

SafeLine® Low Profile

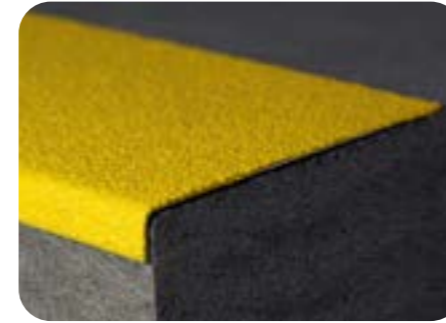
SafeLine® is a cost effective option that combines the best features of the ProStep® and PosiTread® ranges. SafeLine® uses a self adhesive anti-slip tape, manufactured from a unique combination of aluminium oxide and a thick plastic carrier, providing a flexible yet durable anti-slip solution. SafeLine® is available in **Twin, Step** and **Tread** variants, in both natural silver and anodised black aluminium. Suitable for both internal and external use, SafeLine® provides a cost effective safety stair edging that meets standards but does not compromise on aesthetics. SafeLine® Tape can also be applied directly to the stair tread.

Key Features

- Natural Silver Or Black
- 10mm, 25mm or 30mm Leading Edge Options
- SafeLine® Inserts are also available as spares and are easily replaced in the event of damage
- Conforms to all aspects of the relevant safety and public access standards
- Available in A Series to meet the NCC requirements



SureGrip®



SNCAA-50x900-XXX

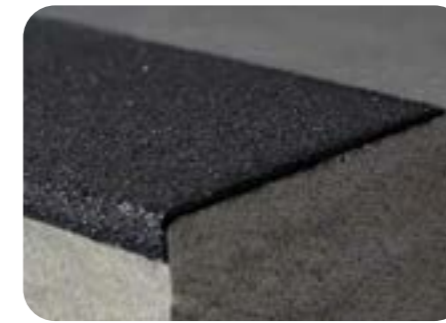
SureGrip™ Galvanised Metal

Heavy Duty Metal Carborundum Safety Stair Edging

Key Features

- Resistant to heavy traffic and the most demanding applications
- 10mm and 25mm Leading Edge Options

Colour Range



SNFAA-50x900-XXX

SureGrip™ FibreGlass

Heavy Duty Extruded Fibreglass Carborundum Safety Stair Edging

Key Features

- Resistant to heavy traffic and the most demanding applications
- Suitable for applications where exposure to aggressive acids is likely
- 10mm and 25mm Leading Edge Options

Colour Range



UMD075-112

SureGrip™ Plates

Heavy Duty Carborundum Landing Plates

Key Features

- Resistant to heavy traffic and the most demanding applications
- Fibreglass option, suitable for applications where exposure to aggressive acids is likely

Colour Range



UMD080-XXX

SafeLine® Step

Low Profile Stair Edging With Anti-Slip Inserts

Key Features

- Easy to install with no fuss - ideal for DIY applications
- Provide a P5 safety rating, the highest in the industry
- Conforms to all aspects of the relevant safety and public access standards
- Supplied to length up to 3.6m
- Available in 6 colours including hazard, and luminescent
- Meet NCC requirements

Colour Range



UMD080-XXX

SafeLine® Twin

Low Profile Stair Edging With Twin Anti-Slip Inserts

Key Features

- Easy to install with no fuss - ideal for DIY applications
- Provide a P5 safety rating, the highest in the industry
- Conforms to all aspects of the relevant safety and public access standards
- Supplied to length up to 3.6m
- Available in 6 colours including hazard, and luminescent
- Meet NCC requirements

Colour Range



UMD080-XXX

SafeLine® Tape

Durable and Flexible Peel&Stick Anti-Slip Tape

Key Features

- Easy to install with no fuss - ideal for DIY applications
- Provide a P5 safety rating, the highest in the industry
- Conforms to all aspects of the relevant safety and public access standards
- Supplied to length up to 3.6m
- 25, 50, 100, 150, 200mm
- Meet NCC requirements

Colour Range





URBAN FURNISHINGS

A TRUSTED PARTNER WITH THOUSANDS OF SUCCESSFUL CIVIL INSTALLATIONS COMPLETED ACCORDING TO SPEC AND SCHEDULE

URBAN FURNISHINGS RANGE

Bike Racks

Inverted U
Hold Rail
Coat Hanger
Cantilevered
Wall Mounted
Horizontal Wall Mounted
Dual Free Standing

Bollards

Fixed
Removable
Traffic

Skateboard Deterrents

Dome
Cylinder
Nosed
Fins

Wall Protection

Corner Guards
Dock Bumpers

Car Parks & Safety

Wheel Stops
Height Clearance Bars
Convex Mirror

Speed Humps

Rubber
Heavy Duty Metal
Portable

Bike Racks

Carefully crafted to minimise welds and provide a distinctive highly visible bike parking facility. They conform to AustRoads Part 14 guidelines and AS2890. Numerous designs are available in both fully galvanised, powder coated and stainless steel options.

Key Features

- Multiple Design Options
- 50mm Tubing as advised by AustRoads to allow easy locking
- Designs to accommodate up to 10 bikes per rack
- Suitable for both public streets and private property
- Easy installation onto most substrates including concrete, bitumen and building walls



Bike Racks



BRU001-SS

INVERTED U

Key Features

- Available in Stainless Steel or Powder Coated



BRS001-SS

HOLD RAIL

Key Features

- Available in Stainless Steel or Powder Coated
- Options Available to Add Class 1 Reflective Tape



BRCH002-PCS

COAT HANGER

Key Features

- Designed to Secure up to 10 Bikes in Each Rack
- Powder Coated Galvanised Steel
- Available in Two, Three, Four and Seven Bay Configurations
- Engineered Tough to Withstand Use and Abuse



BRCLMB002

CANTILEVERED

Key Features

- Powder Coated Galvanised Steel
- Base Plate Installation
- Parks up to 4 Bikes
- Allows Both Front Wheel and Frame to be Locked for Maximum Security



BRDFS001-PCS

DUAL FREE STANDING

Key Features

- Self Supporting Bike Rack
- Allows Two Bikes to be Stored Side by Side
- Suitable for Indoors where Wall Mounted Racks are not Suitable
- Base Plate Installation
- Powder Coated Galvanised Steel



BRW001

WALL MOUNTED

Key Features

- Single or Double Bike Option
- Brackets Designed to Ensure High Holding Strength
- Can be Mounted at 450mm Intervals
- Base Plate Installation
- Powder Coated Galvanised Steel



BRW002

HORIZONTAL WALL MOUNTED

Key Features

- Brackets Designed to Ensure High Holding Strength
- Can be Mounted in Garages in the Space Above the Bonnet of a Car
- Wall Mount Installation
- Powder Coated Galvanised Steel

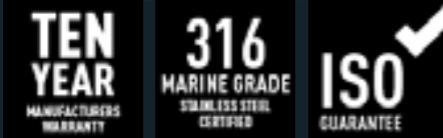
Skateboard Deterrents

CTA's Skateboard Deterrents are a cost effective solution to chipped, broken or wax spoiled retaining walls, benches, planters and other architectural features caused by skateboarders, cyclists and in-line skaters. Designed to handle the large impact forces encountered when coming into contact with skateboards, non-specialised workers can easily install CTA skateboard deterrents or CTA can arrange an installation if required. Available in a multitude of styles including **dome** or **cylindrical knobs**, **square faced** or **bull-nosed** mountable ribs and **recessed fins**.



Key Features

- Manufactured from 316 Marine Grade Stainless Steel
- Aesthetically Pleasing Yet Durable



Installation

Easy to install and can be completed by a non-specialised worker. They are secured by pre-drilling and the use of an epoxy adhesive.

Skateboard Deterrents



CPSBDR20-002-SS

Bull Nosed SBD

- Designed to handle the large impact forces encountered when coming into contact with skateboards
- Can be installed on chamfered and square edges
- Non-specialised workers can easily install or CTA can
- install if required
- Available in a multitude of styles including dome or
- cylindrical knobs, square faced or bull-nosed mountable
- ribs and recessed blades
- Custom sizes, styles and colours can be manufactured



CPSBDR20-002-SS

Rectangle SBD

- Designed to handle the large impact forces encountered when coming into contact with skateboards
- Can be installed on chamfered and square edges
- Non-specialised workers can easily install or CTA can
- install if required
- Available in a multitude of styles including dome or
- cylindrical knobs, square faced or bull-nosed mountable
- ribs and recessed blades
- Custom sizes, styles and colours can be manufactured



CPSBDR20-002-SS

Square Face SBD

- Designed to handle the large impact forces encountered when coming into contact with skateboards
- Can be installed on chamfered and square edges
- Non-specialised workers can easily install or CTA can
- install if required
- Available in a multitude of styles including dome or
- cylindrical knobs, square faced or bull-nosed mountable
- ribs and recessed blades
- Custom sizes, styles and colours can be manufactured



CPSBDR20-002-SS

Small Dome SBD

- Designed to handle the large impact forces encountered when coming into contact with skateboards
- Can be installed on chamfered and square edges
- Non-specialised workers can easily install or CTA can install if required
- Available in a multitude of styles including dome or
- Cylindrical knobs, square faced or bull-nosed mountable
- Ribs and recessed blades
- Custom sizes, styles and colours can be manufactured



CPSBDR20-002-SS

Small Cylindrical SBD

- Designed to handle the large impact forces encountered when coming into contact with skateboards
- Can be installed on chamfered and square edges
- Non-specialised workers can easily install or CTA can install if required
- Available in a multitude of styles including dome or
- Cylindrical knobs, square faced or bull-nosed mountable
- Ribs and recessed blades
- Custom sizes, styles and colours can be manufactured



CPSBDR20-002-SS

Large Cylindrical SBD

- Designed to handle the large impact forces encountered when coming into contact with skateboards
- Can be installed on chamfered and square edges
- Non-specialised workers can easily install or CTA can install if required
- Available in a multitude of styles including dome or
- Cylindrical knobs, square faced or bull-nosed mountable
- Ribs and recessed blades
- Custom sizes, styles and colours can be manufactured



CPSBDF50x50

50x50 Fin

Key Features

- High Polish Finish
- Clean, Accurate and Easy Installation with no Damage to the Substrate



CPSBDF100x100

100x100 Fin

Key Features

- High Polish Finish
- Clean, Accurate and Easy Installation with no Damage to the Substrate



CPSBDF100x150

100x150 Fin

Key Features

- High Polish Finish
- Clean, Accurate and Easy Installation with no Damage to the Substrate

Car Parks & Safety

CTA's range of products for car parks and safety are essential to a well maintained car park. **Wheel Stops** provide impact protection for walls and buildings adjacent to parking facilities. **Height Clearance Bars** provide height warning without causing major damage to vehicles. **Convex Mirrors** designed to increase visibility and safety.



Speed Humps

CTA produce premium recycled rubber and heavy duty steel speed humps, both meet Australian Standard AS2890.

The recycled rubber product is perfect for areas such as car parks, educational facilities and shopping centres. The heavy duty steel product is suitable for truck loading docks and transport depots. To complement CTA's rubber and steel traffic calming solutions, we also offer a portable speed hump. The portable version is ideal as a temporary measure to slow traffic during road works or events.

All CTA designed speed humps are built to exacting standards using high quality materials, they are easy to install and are supplied with all the necessary fixings.



CPSHM112/160x1000

Corner Guards

Key Features

- Two Year Manufacturers Warranty
- Manufactured from Heavy Duty Recycled Rubber
- High Visibility Reflective Panels



Dock Bumper

Key Features

- Two Year Manufacturers Warranty
- Manufactured from Heavy Duty Recycled Rubber
- Reflective Strip for Added Safety
- Available in 1m and 0.5m Sections
- Can be Positioned both Horizontally and Vertically to Achieve the Desired Protection



CPWS-112/160-1650

Wheel Stops

Key Features

- Easily Installed by a Single Person
- Manufactured from Heavy Duty Rubber with 3 Locking Points
- UV Resistant, will not crack, craze or chip away
- Four Colour Options with High Visibility Reflective Yellow Panels

Colour Range



CPSHM112/160x1000

Modular Speed Hump

Key Features

- Excellent Strength, Load Bearing Capacity and UV Stability
- Durable, Lightweight and Easy to Transport
- Available in 250mm Segments in Black or Yellow
- Insert Reflective Cat Eyes to Provide Even Greater Visibility

Detail of wheelstop fixing - expansion bolt shown



UM017

Height Clearance Bars

Key Features

- Two Year Manufacturers Warranty
- Heavy Duty Free Standing or Lightweight Suspended Units
- Bright Safety Yellow with Text Warning
- Small and Large Options
- Custom Design Available
- Brackets can be Tailored to Each Location



CPSHM112/160x1000

Heavy Duty Steel Hump

Key Features

- Manufactured from 6mm thick chequer plate
- Rated at 50 tonnes
- Easily hand loads applied by "B" Doubles



CPTM-700

Convex Mirrors

Key Features

- Twelve Month Manufacturers Warranty
- Increase Visibility and Safety
- Unbreakable, Polycarbonate Mirror Face
- Easy to Self Install
- Custom Brackets Available
- High Visibility Orange Visor



CPSH112/160-002

Portable Speed Hump

Key Features

- Perfect when a temporary solution is needed to slow traffic
- Particularly suited for short term use during road works and events
- Hard wearing and resistant to weather
- Equally effective on asphalt and gravel
- Supplied in a carry bag



Bollards

CTA has a wide range of Bollards in either Galvanised, Powder Coated or Marine Grade Stainless Steel that cater for many different applications and can also be purpose built to suit exacting requirements. CTA Bollards are available in a wide range to suit any application; fixed bollards with base plate and in ground options, removable bollards and delineating bollards, all conform to the Australian Standard AS2890.0



Installation

CTA's fixed bollards can be installed on new or existing surfaces and offer base plate or in ground options.



Applications

CTA's fixed and removable bollards are available in options to cover both light and heavy duty applications. Light applications are generally car parks, factories/warehouses, fire exits and similar environments and heavy duty applications include loading docks, freight yards and bus depots. The CTA fold down bollard is perfect for reserving car spaces. Highly visible plastic traffic management bollards are also available.

Material

Available in highly visible safety yellow powder coated, stainless steel finish or raw galvanised finish.



Bollards



CPSBA003-900

Removable Bollards

90x900mm Powder Coated Steel Bollard Cast In with Padlock

Key Features

- Conform to the Australian Standards AS2890.1
- Easy to install marine Grade Stainless Steel and Powder Coated finishes Easy to install
- Base plate and in ground options range of options
- Tough 5mm wall thickness
- Fully welded horizontal top surface plate



CPSBB003-1200

Removable Bollards

140x1200mm Powder Coated Steel Bollard Cast In with Padlock

Key Features

- Conform to the Australian Standards AS2890.1
- Easy to install marine Grade Stainless Steel and Powder Coated finishes Easy to install
- Base plate and in ground options range of options
- Tough 5mm wall thickness
- Fully welded horizontal top surface plate



CPPBA005-1000

Removable Bollards

90x1000mm Powder Coated Steel Bollard with Base Plate Keyed Lock

Key Features

- Conform to the Australian Standards AS2890.1
- Easy to install marine Grade Stainless Steel and Powder Coated finishes Easy to install
- Base plate and in ground options range of options
- Tough 5mm wall thickness
- Fully welded horizontal top surface plate



CPPBA003-900

Removable Bollards

90x900mm Powder Coated Steel Cast In Bollard with Padlock Bollard

Key Features

- Conform to the Australian Standards AS2890.1
- Easy to install marine Grade Stainless Steel and Powder Coated finishes Easy to install
- Base plate and in ground options range of options
- Tough 5mm wall thickness
- Fully welded horizontal top surface plate



CPPBB003-1200

Removable Bollards

140x1200mm Powder Coated Steel Bollard Cast In with Padlock

Key Features

- Conform to the Australian Standards AS2890.1
- Easy to install marine Grade Stainless Steel and Powder Coated finishes Easy to install
- Base plate and in ground options range of options
- Tough 5mm wall thickness
- Fully welded horizontal top surface plate



CPPBC001-800

Removable Bollards

150x800mm Powder Coated Steel Fold Down Bollard with Base Plate and Padlock.

Key Features

- Conform to the Australian Standards AS2890.1
- Marine Grade Stainless Steel and Powder Coated finishes • Easy to install
- Base plate and in ground options range of options
- Tough 5mm wall thickness
- Fully welded horizontal top surface plate

Bollards

Bollards



CPPBA001

Fixed Bollards

90x900mm Powder Coated Steel Bollard with Base Plate

Key Features

- Conform to the Australian Standards AS2890.1
- Easy to install marine Grade Stainless Steel and Powder Coated finishes Easy to install
- Base plate and in ground options range of options
- Tough 5mm wall thickness
- Fully welded horizontal top surface plate



CPPBA002-1200

Fixed Bollards

90x1200mm Powder Coated Steel Bollard with Base Plate

Key Features

- Conform to the Australian Standards AS2890.1
- Easy to install marine Grade Stainless Steel and Powder Coated finishes Easy to install
- Base plate and in ground options range of options
- Tough 5mm wall thickness
- Fully welded horizontal top surface plate



CPPBA001-1000-FX

Fixed Bollards

90x1000mm Flexible Powder Coated Steel Bollard with Base Plate

Key Features

- Conform to the Australian Standards AS2890.1
- Easy to install marine Grade Stainless Steel and Powder Coated finishes Easy to install
- Base plate and in ground options range of options
- Tough 5mm wall thickness
- Fully welded horizontal top surface plate



CPSBA001-950

Fixed Bollards

100x950mm Stainless Steel Bollard with Base Plate

Key Features

- Conform to the Australian Standards AS2890.1
- Easy to install marine Grade Stainless Steel and Powder Coated finishes Easy to install
- Base plate and in ground options range of options
- Tough 5mm wall thickness
- Fully welded horizontal top surface plate



CPSBB001-1200

Fixed Bollards

140x1200mm Stainless Steel Bollard with Base Plate

Key Features

- Conform to the Australian Standards AS2890.1
- Easy to install marine Grade Stainless Steel and Powder Coated finishes Easy to install
- Base plate and in ground options range of options
- Tough 5mm wall thickness
- Fully welded horizontal top surface plate



CPPBA002-1500

In-Ground Bollards

90x1500mm Powder Coated Steel (1200 + 300) Cast In Bollard

Key Features

- Conform to the Australian Standards AS2890.1
- Easy to install marine Grade Stainless Steel and Powder Coated finishes Easy to install
- Base plate and in ground options range of options
- Tough 5mm wall thickness
- Fully welded horizontal top surface plate



CPPBB001-900

Fixed Bollards

140x900mm Powder Coated Steel Bollard with Base Plate

Key Features

- Conform to the Australian Standards AS2890.1
- Easy to install marine Grade Stainless Steel and Powder Coated finishes Easy to install
- Base plate and in ground options range of options
- Tough 5mm wall thickness
- Fully welded horizontal top surface plate



CPDFP-780

Fixed Bollards

780x100mm Delineating Post Flexible Large

Key Features

- Conform to the Australian Standards AS2890.1
- Marine Grade Stainless Steel and Powder Coated finishes • Easy to install
- Base plate and in ground options range of options
- Tough 5mm wall thickness
- Fully welded horizontal top surface plate



CPFP-450

Fixed Bollards

450x100mm Delineating Post Flexible Small

Key Features

- Conform to the Australian Standards AS2890.1
- Marine Grade Stainless Steel and Powder Coated finishes • Easy to install
- Base plate and in ground options range of options
- Tough 5mm wall thickness
- Fully welded horizontal top surface plate



CPPBB002-1200

In-Ground Bollards

90x1200mm Powder Coated Steel Cast In Bollard (900 + 300)

Key Features

- Conform to the Australian Standards AS2890.1
- Easy to install marine Grade Stainless Steel and Powder Coated finishes Easy to install
- Base plate and in ground options range of options
- Tough 5mm wall thickness
- Fully welded horizontal top surface plate



CPPBB002-1200

In-Ground Bollards

140x1200mm Powder Coated Steel Cast In Bollard (900+300)

Key Features

- Conform to the Australian Standards AS2890.1
- Easy to install marine Grade Stainless Steel and Powder Coated finishes Easy to install
- Base plate and in ground options range of options
- Tough 5mm wall thickness
- Fully welded horizontal top surface plate



CPPBB002-1500

In-Ground Bollards

140x1500mm Powder Coated Steel (1200 + 300) Cast In Bollard

Key Features

- Conform to the Australian Standards AS2890.1
- Easy to install marine Grade Stainless Steel and Powder Coated finishes Easy to install
- Base plate and in ground options range of options
- Tough 5mm wall thickness
- Fully welded horizontal top surface plate

MOBILITY & ACCESS AIDS



MOBILITY & ACCESS RANGE

**Braille
Signs**

Diamond Grip

**Glazed
Decals**

Diamond Grip Grab Bars
Diamond Grip Handrail Domes

DiamondGrip® Grab Bars & Handrails

DiamondGrip® grab bars are available in eight standard part numbers which conform to all aspects of Australian Standard 1428.1. They are designed to suit all configurations required for disabled public toilet and shower recess applications.

DiamondGrip® grab bars are shaped from one piece of 316 marine grade stainless steel tube and polished to ensure they last the test of time without rusting. The fixing plates are securely welded all round to form a strong and reliable unit, and once installed are hidden behind stainless steel caps.

CTA manufactures DiamondGrip® Handrail domes which incorporate a Braille message and are available as a combination set, advising blind or partially sighted pedestrians they are approaching a stair or ramp from either an upwardly or downwardly direction. As a result Aged Care facilities are exempt from using TGSIs under the NCC if raised dome buttons are used on handrails, due to Ground tactile indicators causing problems for users of walking frames and wheelchairs



Braille Signs

CTA Braille Signs are available as the standard white on blue, or can be manufactured to complement a large range of colour schemes. They are available in standard acrylic, anodised aluminium and stainless steel finishes. CTA ensures that all elements of these signs including the colour contrast of specified colours, meet the requirements of AS1428.

CTA standard Braille signs are 'peel and stick', vandal resistant and a hygienically clean, flexible, continuous surface. These signs can be applied to all flat or curved surfaces, or added to existing signs.

CTA Braille Signs are the only Australian made signs to incorporate a 5mm luminance contrast boarder as specified in the BCA.



DiamondGrip



GRS -XXX

DiamondGrip® Grab Bars

Key Features

- Meets the requirements of AS1428.1
- Contemporary Design
- Supplied with all required fixings
- 316 Marine Grade Stainless Steel with a Satin Finish
- Eight Standard Configurations



GRS -XXX

DiamondGrip® Handrail Domes

Key Features

- Meets the requirements of AS1428.1
- Peel&Stick Installation
- Manufactured from a single piece of 316 Marine Grade Stainless Steel
- Match the Styles of Most Handrails
- Highly Functional, Providing Enhanced Awareness i.e. Direction of Travel

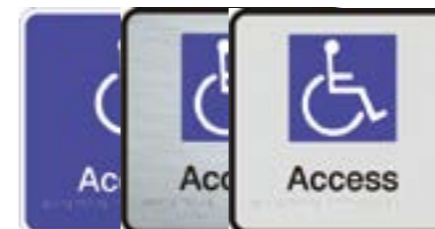


GRS -XXX

DiamondGrip® Handrail System

Key Features

- Meets the requirements of AS1428.1
- Manufactured from a single piece of 316 Marine Grade Stainless Steel
- Consists of 11 Hydraulically Swagged Stainless Steel Cable Between Posts and a Stainless Steel Top Rail
- Manufactured to Suit the Required Overall Handrail Lengths and Post Positions



GRS -XXX

Braille Signs

Key Features

- Conform to the National Construction Code (D3.6)
- Conform to the Unified Braille Code (UBC)
- Specified by Government Bodies and Architects
- Fire and Vandal Resistant
- Available in Acrylic, Aluminium and Stainless Steel

Glazed Decals

Key Features

- Meets the requirements of AS1428.1
- UV Resistant Vinyl
- Peel&Stick Installation
- A Range of Colours, Designs and Custom Options
- Fast Turnaround Time
- CTA will ensure the installation meets all Luminance Contrast requirements

Fully glazed doors represent a significant safety hazard to the vision impaired, who tend to focus only a short distance in front of themselves as they walk. This risk can be mitigated by the application of well designed, highly visible decals or visual indicators to these doors.

CTA provides well designed solutions so a person with vision impairment is able to detect the visual barrier.

CTA ensures the luminance contrast criteria, and the dimensional criteria of decal width and installation height have all been met.

Colours

A range of colours are available, and custom-made decals can be ordered incorporating a design such as a company logo





FLOOR COVERINGS

FLOOR COVERING RANGE

StepRight® Matting

StepRight® Entrance Matting
StepRight® Ultra
StepRight® Modular Matting

Entrymaster® Matting

Entrymaster® Premier Matting
Entrymaster® Classic Matting

Duraclean® Matting

Fordex® Safety Flooring

Entrymaster® Matting

The Entrymaster® Range is manufactured from a Heavy Duty multi-denier polypropylene yarn system. This is the heaviest fibre available in this product category.

Entrymaster® Premier entrance matting is manufactured with a rubber-reinforced profile. This profile prevents crushing of the unique dirt entrapment system, ensuring performance in even the highest traffic areas. Entrymaster® Premier is designed to be installed into recesses and large inlay areas.

Entrymaster® Classic is the perfect choice, when you need a quality commercial surface mounted entry mat to keep your entrance area clean and safe. Entrymaster® Classic features a 'Water Dam' edge design which retains dirt and water, ensuring the area surrounding the mat remains clean and dry. Entrymaster® Classic is easily cleaned by sweeping, vacuuming or hosing, dries quickly and the durable polypropylene will not fade, rot or stain. The cleated back minimises movement on most surfaces.

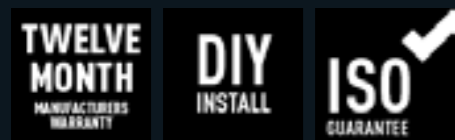


Duraclean® Matting

Duraclean® Entrance Matting is designed to be installed into an inlay or recess and is available in 2.0m or 4.0m wide variants. This great matting is perfect for large entrance areas in shopping centres, lobbies, apartments and offices.

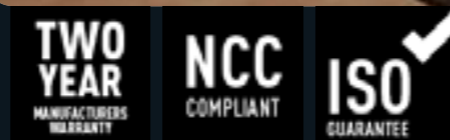
Economically priced, it provides a durable option for either loose lay applications or for use in a recess.

The Berber style needle punch carpet surface of Duraclean® provides great wear characteristics with an attractive appearance. Helps to maintain a clean, good looking entrance for years to come.



StepRight® Matting

The StepRight® range silently catches moisture, grime, dust and dirt at all entrance points, leaving internal floors clean, dry and safe. **StepRight® Entrance Matting** is fully customisable and manufactured to size, incorporating a combination of rubber and carpet inserts in a range of colours, which can be specified as required to match the surrounding decor. **StepRight® Ultra** is highly durable, low maintenance, resistant to dirt and unaffected by moisture. Commonly used in residential, commercial and public buildings. Suited to both light and heavy foot traffic, ensuring a clean, safe and stylish environment. **StepRight® Modular** is designed with multiple 200x200mm modules manufactured from heavy duty plastic. StepRight® Modular is available in two profiles, a Carpet and Edge Module. The Edge Module has been designed to allow precise sizing of the installation without having to cut through a Carpet Module, it also frames the mat for overall aesthetics.



Fordex® Safety Flooring

Fordex® marine grade safety flooring has a durable, attractive surface consisting of numerous diamond shaped nodules that are further abraded on the top surface. This design improves grip even in the most challenging conditions. The surface nodules channel water away reducing unsightly and dangerous water ponding which can be the major cause of aquaplaning.

Fordex® is a cost effective way of eliminating the risk of slips, trips and falls, particularly on ramps. Fordex® provides excellent resistance to wear and the chemicals typical to the marine industry such as fuel, grease, chlorine and salt.



UM005SR-X-158

Fordex® Safety Flooring

Key Features

- Two Year Manufacturers Warranty
- Diamond nodules channel water away, reducing unsightly and dangerous surface pooling
- Delivers a P5 anti-slip rating, the highest in the industry
- Unique blend of polymers provide optimum UV stability and wear resistance
- Built-in fungicide to prevent bacterial growth that can sometimes lead to unsightly stains
- Designed to remain vibrant for the life of the product

Colour Range



SPECIFICATIONS



UM005SR-X-158

StepRight® Entrance Matting

Key Features

- Meets the requirements of AS1428.1
- Flexible Construction, StepRight® will not dome and cause Annoying Drumming
- UV Stable, Stain Resistant and Suitable in both Wet and Dry Conditions
- Rubber Cushioning Ribs Ensure StepRight® Matting Contours to the Substrate to Reduce Impact Noise

Carpet Colour Range



Rubber Colour Range



SPECIFICATIONS



UM005SR-X-158

StepRight® Ultra

Key Features

- Unique Homogeneous Construction makes StepRight® Ultra Truly Reversible, Doubling Service Life
- Anti-Fungal and Resistant to Bacterial Growth as well as UV Stable and Stain Resistant; Making it Suitable for both wet and dry areas
- Available in Either Natural Silver or Black Anodised with a Range of Coloured Inserts

Colour Range



SPECIFICATIONS



UM005SR-160-X-158

StepRight® Modular

Key Features

- Meets the requirements of AS1428.1
- Modules can be easily replaced
- Heel proof construction to prevent heels from being trapped
- Suits recess depths of 12 to 16mm
- Reducing strip is also available for surface mounted options

Colour Range



SPECIFICATIONS



UM005SR-X-158

Entrymaster® Classic

Key Features

- Three Year Manufacturers Warranty
- Meets flammability standards
- Excellent dirt and water retention and easily cleaned
- Durable polypropylene will not rot, fade or stain and dries quickly
- 5 Standard sizes
- Anti-static, safe for use in sensitive areas rating 1.2KV

Colour Range



SPECIFICATIONS



UM005SR-X-158

Entrymaster® Premier

Key Features

- Five Year Manufacturers Warranty
- Ideal for high traffic entrance areas, both internal and external
- Reinforced chevron pattern provides mega scraping action
- Heavy duty polypropylene yarn
- Excellent dirt and water retention and easily cleaned
- Smooth rubber backing, ideal for hard surfaces

Colour Range



SPECIFICATIONS



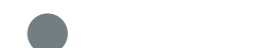
UM005SR-X-158

Duraclean® Entrance Matting

Key Features

- Twelve Month Manufacturers Warranty
- Meets flammability standards
- Durable polypropylene will not rot, fade or stain and dries quickly
- 2.0m Wide has a heavy duty vinyl backing
- 4.0m Wide has a synthetic rubber backing
- Can be installed into a recess or loose laid

Colour Range



SPECIFICATIONS

SURESTEEL® CLASSIC - HAZARD

CODE	MATERIAL	SIDE FACE	FIXING SYSTEM
CRS001	Stainless Steel	Smooth	Flat Base / Adhesive
CRS001-PS	Stainless Steel	Smooth	Peel & Stick PSA
CRS001-PS-160	Black Anodised (S/S)	Smooth	Peel & Stick PSA
CRS002	Stainless Steel	Smooth	6x15mm Spigot
CRS003	Stainless Steel	Smooth	Tapered Screw Hole
CRS009	Stainless Steel	Smooth	Drill&Lock® 20mm
CRS007	Stainless Steel	Smooth	Drill&Lock® 25mm
CRS008	Stainless Steel & Recycled Materials	Smooth	Drill&Lock® 20mm
CRST001	Stainless Steel	Stepped	Flat Base / Adhesive
CRST002	Stainless Steel	Stepped	6x15mm Spigot
CRST003	Stainless Steel	Stepped	Tapered Screw Hole
CRST006	Stainless Steel	Stepped	Drill&Lock® 20mm
CRST007	Stainless Steel	Stepped	Drill&Lock® 25mm
CRS006-160	Black Anodised (S/S)	Smooth	Drill&Lock® 20mm
CRS002-160	Black Anodised (S/S)	Smooth	6x15mm Spigot
CRS006-AL	Aluminium	Smooth	Drill&Lock® 20mm
CRS006-B	Brass	Smooth	Drill&Lock® 20mm
CRST006-B	Brass	Stepped	Drill&Lock® 20mm
CRST007-B	Brass	Stepped	Drill&Lock® 20mm

SURESTEEL® SELECT - HAZARD

CODE	COLOUR	POLYMER	FIXING SYSTEM
CRPIS006-108	Ivory	Top (Stainless Skirt)	Drill&Lock® 20mm
CRPIS006-112	Yellow	Top (Stainless Skirt)	Drill&Lock® 20mm
CRPIS006-124	Terracotta	Top (Stainless Skirt)	Drill&Lock® 20mm
CRPIS006-135	Ocean Blue	Top (Stainless Skirt)	Drill&Lock® 20mm
CRPIS006-142	Green	Top (Stainless Skirt)	Drill&Lock® 20mm
CRPIS006-155	Grey	Top (Stainless Skirt)	Drill&Lock® 20mm
CRPIS006-160	Black	Top (Stainless Skirt)	Drill&Lock® 20mm
CRPIS006-PL	Photo-Luminescent	Top (Stainless Skirt)	Drill&Lock® 20mm
CRPS007-108	Ivory	Skirt (Stainless Top)	Drill&Lock® 20mm
CRPS007-112	Yellow	Skirt (Stainless Top)	Drill&Lock® 20mm
CRPS007-124	Terracotta	Skirt (Stainless Top)	Drill&Lock® 20mm
CRPS007-135	Ocean Blue	Skirt (Stainless Top)	Drill&Lock® 20mm
CRPS007-142	Green	Skirt (Stainless Top)	Drill&Lock® 20mm
CRPS007-155	Grey	Skirt (Stainless Top)	Drill&Lock® 20mm
CRPS007-160	Black	Skirt (Stainless Top)	Drill&Lock® 20mm
CRPS007-PL	Photo-Luminescent	Skirt (Stainless Top)	Drill&Lock® 20mm

SURESTEEL® CARBORUNDUM - HAZARD

CODE	COLOUR	SIDE FACE	FIXING SYSTEM
CIS001-SS-112	Yellow	Smooth	Flat base / Adhesive
CIS001-SS-108	White	Smooth	Flat base / Adhesive
CIS001-SS-160	Black	Smooth	Flat base / Adhesive
CIS002-SS-112	Yellow	Smooth	6x15mm Spigot
CIS002-SS-108	White	Smooth	6x15mm Spigot
CIS002-SS-160	Black	Smooth	6x15mm Spigot
CIS006-SS-112	Yellow	Smooth	Drill&Lock® 20mm
CIS006-SS-108	White	Smooth	Drill&Lock® 20mm
CIS006-SS-160	Black	Smooth	Drill&Lock® 20mm
CIST001-SS-112	Yellow	Step	Flat base / Adhesive
CIST001-SS-108	White	Step	Flat base / Adhesive
CIST001-SS-160	Black	Step	Flat base / Adhesive
CIST002-SS-112	Yellow	Step	6x15mm Spigot
CIST002-SS-108	White	Step	6x15mm Spigot
CIST002-SS-160	Black	Step	6x15mm Spigot
CIST006-SS-112	Yellow	Step	Drill&Lock® 20mm
CIST006-SS-108	White	Step	Drill&Lock® 20mm
CIST006-SS-160	Black	Step	Drill&Lock® 20mm

SURESTEEL® PLATES (HAZARD)

CODE	COLOUR	BASE PLATE / STUD	SIZE
CRS005	Stainless Steel	Stainless Steel	600x300
CRPIS005-108	Ivory	Polymer Infill S/S Plate	600x300
CRPIS005-112	Yellow	Polymer Infill S/S Plate	600x300
CRPIS005-124	Terracotta	Polymer Infill S/S Plate	600x300
CRPIS005-128	Orange	Polymer Infill S/S Plate	600x300
CRPIS005-135	Ocean Blue	Polymer Infill S/S Plate	600x300
CRPIS005-142	Green	Polymer Infill S/S Plate	600x300
CRPIS005-155	Grey	Polymer Infill S/S Plate	600x300
CRPIS005-160	Black	Polymer Infill S/S Plate	600x300
CRPIS005-PL	Photo-Luminescent	Polymer Infill S/S Plate	600x300
CRS005-09-SMP	Stainless Steel (Satin)	Stamped Steel	300x300
CRS005-09-SMP-ANO160	Black Anodised (Satin)	Stamped Steel	300x300

SURESTEEL® TRANSTION PLATES (HAZARD)

CODE	COLOUR	BASE PLATE / STUD	SIZE
CRTPS005	Stainless Steel	Stainless Steel	600x1200
CRTPP1005-108	Ivory	SS / Polymer Infill	600x1200
CRTPP1005-112	Yellow	SS / Polymer Infill	600x1200
CRTPP1005-155	Grey	SS / Polymer Infill	600x1200
CRTPP1005-160	Black	SS / Polymer Infill	600x1200
CRTPP1005-135	Ocean Blue	SS / Polymer Infill	600x1200
CRTPP1005-124	Terracotta	SS / Polymer Infill	600x1200
CRTPP1005-142	Green	SS / Polymer Infill	600x1200
CRTPS005-CHQ	Chequered Steel	Chequered Steel	600x1200
CRTPP1005-CHQ-108	CHQ + Ivory	CHQ / Polymer Infill	600x1200
CRTPP1005-CHQ-112	CHQ + Yellow	CHQ / Polymer Infill	600x1200
CRTPP1005-CHQ-155	CHQ + Grey	CHQ / Polymer Infill	600x1200
CRTPP1005-CHQ-160	CHQ + Black	CHQ / Polymer Infill	600x1200
CRTPP1005-CHQ-135	CHQ + Ocean Blue	CHQ / Polymer Infill	600x1200
CRTPP1005-CHQ-124	CHQ + Terracotta	CHQ / Polymer Infill	600x1200
CRTPP1005-CHQ-142	CHQ + Green	CHQ / Polymer Infill	600x1200
CRTPS005-AL	Matte Aluminium	Matte Aluminium	600x1200
CRTPP1005-AL-108	Al + Ivory	Al / Polymer Infill	600x1200
CRTPP1005-AL-112	Al + Yellow	Al / Polymer Infill	600x1200
CRTPP1005-AL-155	Al + Grey	Al / Polymer Infill	600x1200
CRTPP1005-AL-160	Al + Black	Al / Polymer Infill	600x1200
CRTPP1005-AL-135	Al + Ocean Blue	Al / Polymer Infill	600x1200
CRTPP1005-AL-124	Al + Terracotta	Al / Polymer Infill	600x1200
CRTPP1005-AL-142	Al + Green	Al / Polymer Infill	600x1200



SURESTEEL® SELECT- DIRECTIONAL

CODE	COLOUR	POLYMER	FIXING SYSTEM
RCHPIS006-108	Ivory	Top (Infill)	Drill&Lock® 20mm
RCHPIS006-112	Yellow	Top (Infill)	Drill&Lock® 20mm
RCHPIS006-124	Terracotta	Top (Infill)	Drill&Lock® 20mm
RCHPIS006-135	Ocean Blue	Top (Infill)	Drill&Lock® 20mm
RCHPIS006-142	Green	Top (Infill)	Drill&Lock® 20mm
RCHPIS006-155	Grey	Top (Infill)	Drill&Lock® 20mm
RCHPIS006-160	Black	Top (Infill)	Drill&Lock® 20mm
RCHPIS006-PL	Photo-Luminescent	Top (Infill)	Drill&Lock® 20mm
RCHPSS006-108	Ivory	Skirt (Stainless Top)	Drill&Lock® 20mm
RCHPSS006-112	Yellow	Skirt (Stainless Top)	Drill&Lock® 20mm
RCHPSS006-124	Terracotta	Skirt (Stainless Top)	Drill&Lock® 20mm
RCHPSS006-135	Ocean Blue	Skirt (Stainless Top)	Drill&Lock® 20mm
RCHPSS006-142	Green	Skirt (Stainless Top)	Drill&Lock® 20mm
RCHPSS006-155	Grey	Skirt (Stainless Top)	Drill&Lock® 20mm
RCHPSS006-160	Black	Skirt (Stainless Top)	Drill&Lock® 20mm
RCHPSS006-PL	Photo-Luminescent	Skirt (Stainless Top)	Drill&Lock® 20mm

SURESTEEL® CLASSIC - DIRECTIONAL

CODE	MATERIAL	SIDE FACE	FIXING SYSTEM
RHLS002	Stainless Steel	Smooth	6x15mm Spigot
RHLST002	Stainless Steel	Stepped	6x15mm Spigot
RHLS006	Stainless Steel	Smooth	Drill&Lock® 20mm
RHLST006	Stainless Steel	Stepped	Drill&Lock® 20mm
RHLS002-160	Black Anodised (S/S)	Smooth	6x15mm Spigot
RHLST002-160	Black Anodised (S/S)	Stepped	6x15mm Spigot
RHLS006-160	Black Anodised (S/S)	Smooth	Drill&Lock® 20mm
RHLST006-160	Black Anodised (S/S)	Stepped	Drill&Lock® 20mm

SURESTEEL® CARBORUNDUM - DIRECTIONAL

CODE	COLOUR	SIDE FACE	FIXING SYSTEM
RHLCIS006-160	Black	Smooth	6x15mm Spigot
RHLCIS006-122	Yellow	Smooth	6x15mm Spigot
RHLCIS006-108	White	Smooth	6x15mm Spigot
RHLCIS006-155	Grey	Smooth	6x15mm Spigot



GRANITAC®

CODE	PROFILE	SIZE	COLOUR
HGT108CT	Hazard	300x300x20+5	Ivory
HGT112CT	Hazard	300x300x20+5	Yellow
HGT155CT	Hazard	300x300x20+5	Grey
HGT160CT	Hazard	300x300x20+5	Black
HGTS108CT	Hazard	300x300x40+5	Ivory Over Bluestone
HGTS135CT	Hazard	300x300x40+5	Bluestone Over Ivory
DGT108CT	Directional	300x300x20+5	Ivory
DGT112CT	Directional	300x300x20+5	Yellow
DGT155CT	Directional	300x300x20+5	Grey
DGT160CT	Directional	300x300x20+5	Black
DGTS108CT	Directional	300x300x40+5	Ivory Over Bluestone
DGTS135CT	Directional	300x300x40+5	Bluestone Over Ivory

COBBLETAC® PRECAST

CODE	PROFILE	SIZE	COLOUR
CPL108CT	Hazard	300x300x40+5	Ivory
CPL112CT	Hazard	300x300x40+5	Yellow
CPL124CT	Hazard	300x300x40+5	Terracotta
CPL160CT	Hazard	300x300x40+5	Black
CPL108CT-0960	Hazard	300x300x60+5	Ivory
CPL112CT-0960	Hazard	300x300x60+5	Yellow
CPL124CT-0960	Hazard	300x300x60+5	Terracotta
CPL160CT-0960	Hazard	300x300x60+5	Black
CPLD108CT	Directional	300x300x40+5	Ivory
CPLD112CT	Directional	300x300x40+5	Yellow
CPLD124CT	Directional	300x300x40+5	Terracotta
CPLD160CT	Directional	300x300x40+5	Black
CPLD108CT-0960	Directional	300x300x60+5	Ivory
CPLD112CT-0960	Directional	300x300x60+5	Yellow
CPLD124CT-0960	Directional	300x300x60+5	Terracotta
CPLD160CT-0960	Directional	300x300x60+5	Black

COBBLETAC® PORCELAIN

CODE	PROFILE	SIZE	COLOUR
HC108CT	Hazard	300x300x10+5	Ivory
HC112CT	Hazard	300x300x10+5	Yellow
HC155CT	Hazard	300x300x10+5	Grey
HC160CT	Hazard	300x300x10+5	Black
DC108CT	Directional	300x300x10+5	Ivory
DC112CT	Directional	300x300x10+5	Yellow
DC155CT	Directional	300x300x10+5	Grey
DC160CT	Directional	300x300x10+5	Black

POLYCAP®

CODE	COLOUR	PROFILE	FIXING SYSTEM
TSPC-108	Ivory	Hazard	Drill & Lock
TSPC-112	Yellow	Hazard	Drill & Lock
TSPC-124	Terracotta	Hazard	Drill & Lock
TSPC-135	Ocean Blue	Hazard	Drill & Lock
TSPC-155	Grey	Hazard	Drill & Lock
TSPC-160	Black	Hazard	Drill & Lock

POLYSTUD®

CODE	COLOUR	PROFILE	FIXING SYSTEM
TSS002-PP-108	Ivory	Hazard	Drill & Lock
TSS002-PP-112	Yellow	Hazard	Drill & Lock
TSS002-PP-124	Terracotta	Hazard	Drill & Lock
TSS002-PP-128	Orange	Hazard	Drill & Lock
TSS002-PP-135	Ocean Blue	Hazard	Drill & Lock
TSS002-PP-155	Grey	Hazard	Drill & Lock
TSS002-PP-160	Black	Hazard	Drill & Lock
TSRS002-PP-108	Ivory	Directional	Drill & Lock
TSRS002-PP-112	Yellow	Directional	Drill & Lock
TSRS002-PP-124	Terracotta	Directional	Drill & Lock
TSRS002-PP-128	Orange	Directional	Drill & Lock
TSRS002-PP-135	Ocean Blue	Directional	Drill & Lock
TSRS002-PP-155	Grey	Directional	Drill & Lock
TSRS002-PP-160	Black	Directional	Drill & Lock

POLYBLADE®

CODE	COLOUR	PROFILE	FIXING SYSTEM
PB108H-10	Ivory	Hazard	10mm Blade
PB112H-10	Yellow	Hazard	10mm Blade
PB124H-10	Terracotta	Hazard	10mm Blade
PB160H-10	Black	Hazard	10mm Blade
PB108H-15	Ivory	Hazard	15mm Blade
PB112H-15	Yellow	Hazard	15mm Blade
PB124H-15	Terracotta	Hazard	15mm Blade
PB160H-15	Black	Hazard	15mm Blade
PB108D-10	Ivory	Directional	10mm Blade
PB112D-10	Yellow	Directional	10mm Blade
PB124D-10	Terracotta	Directional	10mm Blade
PB160D-10	Black	Directional	10mm Blade
PB108D-15	Ivory	Directional	10mm Blade
PB112D-15	Yellow	Directional	10mm Blade
PB124D-15	Terracotta	Directional	10mm Blade
PB160D-15	Black	Directional	10mm Blade

POLYTILE® (SCREW DOWN)

CODE	COLOUR	PROFILE	SIZE
PTHRAT-108	Ivory	Hazard	300x300
PTHRAT-112	Yellow	Hazard	300x300
PTHRAT-113	Daffodil	Hazard	300x300
PTHRAT-155	Grey	Hazard	300x300
PTHRAT-160	Black	Hazard	300x300
PTHRAT-130	Sky Blue	Hazard	300x300
PTHRAT-124	Terracotta	Hazard	300x300
PTDRAT-108	Ivory	Directional	300x300
PTDRAT-112	Yellow	Directional	300x300
PTDRAT-113	Daffodil	Directional	300x300
PTDRAT-155	Grey	Directional	300x300
PTDRAT-160	Black	Directional	300x300
PTDRAT-130	Sky Blue	Directional	300x300
PTDRAT-124	Terracotta	Directional	300x300

AUSTACT®

CODE	COLOUR	PROFILE	FIXING SYSTEM
TA20-160	Black	Hazard	Drill & Lock
TA20-108	White	Hazard	Drill & Lock
TA20-155	Grey	Hazard	Drill & Lock
TA20-112	Yellow	Hazard	Drill & Lock
TA20-124	Terracotta	Hazard	Drill & Lock
TA20-128	Orange	Hazard	Drill & Lock
TA20-113	Daffodil	Hazard	Drill & Lock
TA20-135	Blue	Hazard	Drill & Lock
TA20-132	Sky Blue	Hazard	Drill & Lock
TDA20-160	Black	Directional	Drill & Lock
TDA20-108	White	Directional	Drill & Lock
TDA20-155	Grey	Directional	Drill & Lock
TDA20-112	Yellow	Directional	Drill & Lock
TDA20-124	Terracotta	Directional	Drill & Lock
TDA20-128	Orange	Directional	Drill & Lock
TDA20-113	Daffodil	Directional	Drill & Lock
TDA20-135	Blue	Directional	Drill & Lock
TDA20-132	Sky Blue	Directional	Drill & Lock

AUSTACT® CARBORUNDUM

CODE	COLOUR	PROFILE	FIXING SYSTEM
TA20-112-BS	Yellow With Black Carborundum Infill	Hazard	Drill & Lock

POLYTILE® (PEEL & STICK PSA)

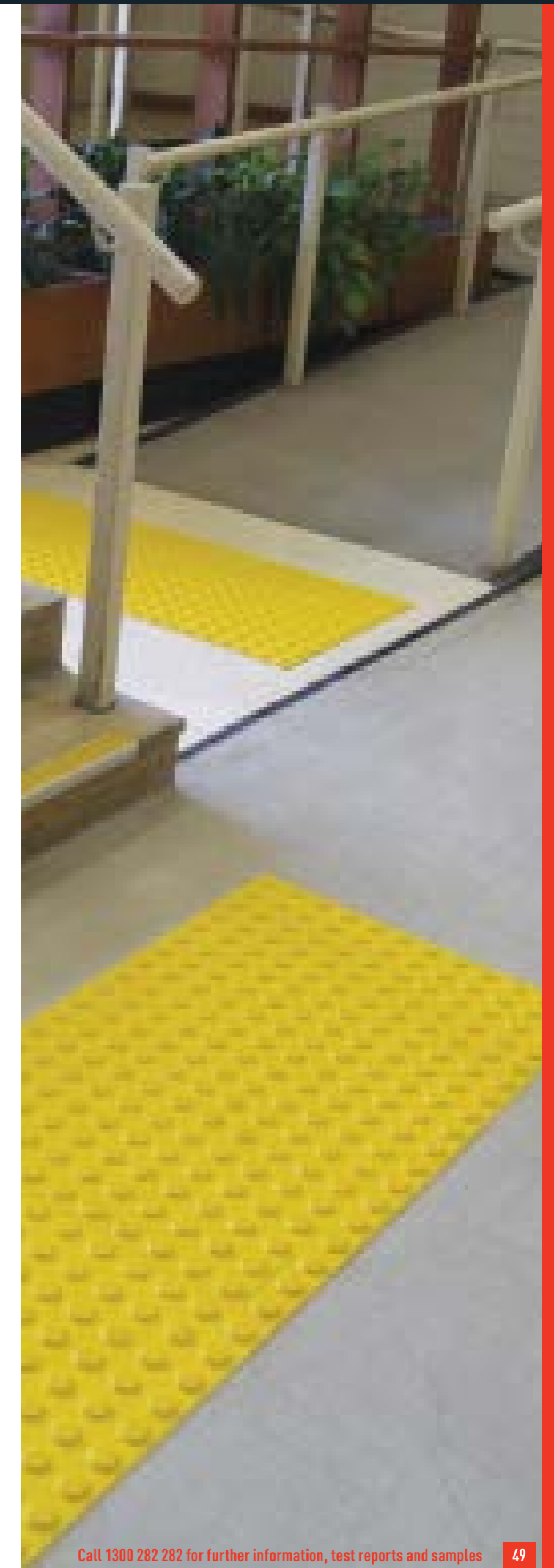
CODE	COLOUR	PROFILE	SIZE
PTH-108	Ivory	Hazard	300x300
PTH-112	Yellow	Hazard	300x300
PTH-113	Daffodil	Hazard	300x300
PTH-155	Grey	Hazard	300x300
PTH-160	Black	Hazard	300x300
PTH-130	Sky Blue	Hazard	300x300
PTH-124	Terracotta	Hazard	300x300
PTD-108	Ivory	Directional	300x300
PTD-112	Yellow	Directional	300x300
PTD-113	Daffodil	Directional	300x300
PTD-155	Grey	Directional	300x300
PTD-160	Black	Directional	300x300
PTD-130	Sky Blue	Directional	300x300
PTD-124	Terracotta	Directional	300x300

POLYPAD®

CODE	COLOUR	PROFILE	SIZE
HPP108CT-54	Ivory	Hazard	900x600
HPP112CT-54	Yellow	Hazard	900x600
HPP124CT-54	Terracotta	Hazard	900x600
HPP128CT-54	Sunset Orange	Hazard	900x600
HPP130CT-54	Sky Blue	Hazard	900x600
HPP135CT-54	Ocean Blue	Hazard	900x600
HPP155CT-54	Grey	Hazard	900x600
HPP158CT-54	Storm Grey	Hazard	900x600
HPP160CT-54	Black	Hazard	900x600
DPP108CT-54	Ivory	Directional	900x600
DPP112CT-54	Yellow	Directional	900x600
DPP124CT-54	Terracotta	Directional	900x600
DPP128CT-54	Sunset Orange	Directional	900x600
DPP130CT-54	Sky Blue	Directional	900x600
DPP135CT-54	Ocean Blue	Directional	900x600
DPP155CT-54	Grey	Directional	900x600
DPP158CT-54	Storm Grey	Directional	900x600
DPP160CT-54	Black	Directional	900x600

RHINOTAC®

CODE	COLOUR	PROFILE	SIZE
PRTH108-18	White	Hazard	600x300
PRTH112-18	Yellow	Hazard	600x300
PRTH160-18	Black	Hazard	600x300
PRTD108-18	White	Directional	600x300
PRTD112-18	Yellow	Directional	600x300
PRTD160-18	Black	Directional	600x300



HIGHLIGHT® FIVEBAR

CODE	MODEL	SLIP RATING	INSERT
UMD001-SNCI-XXX	SurfaceMount	P5	Carborundum
UMD011A-SNCI-PL-XXX	SurfaceMount	P5	Egress
UMD012A-SNCI-XXX	Recessed	P5	Carborundum
UMD012A-SNCI-PL-XXX	Recessed	P5	Egress

HIGHLIGHT® THREEBAR

CODE	MODEL	COLOUR	INSERT
UMD072-SNCI-XXX	ThreeBar Recessed	P5	Natural Silver
UMD073-SNCI-XXX	"	P5	Black
UMD070	ThreeBar Inlaid	P5	Natural Silver
UMD071-SNCI-XXX	"	P5	Black

SAFELINE® TWIN

CODE	MODEL	SLIP RATING	COLOUR
UMD10A-XXX	10mm SafeLine A Series	P5	Natural Silver
UMD10A160-XXX	"	P5	Black
UMD10-XXX	25mm SafeLine Standard Full Face	P5	Natural Silver
UMD10160-XXX	"	P5	Black

SAFELINE® STEP

CODE	MODEL	SLIP RATING	COLOUR
UMD080-XXX	SafeLine Tread	P5	Natural Silver
UMD081-XXX		P5	Black
UMD075-XXX	10mm SafeLine Angle	P5	Natural Silver
UMD076-XXX		P5	Black
UMD077-XXX	10mm SafeLine Angle with Ramp	P5	Natural Silver
UMD078-XXX		P5	Black
UMD085-XXX	30mm SafeLine Angle	P5	Natural Silver
UMD086-XXX		P5	Black

SAFELINE® TAPE

CODE	WIDTH	LENGTH
UMD080-XXX	25mm	18.3m
UMD081-XXX	31mm	18.3m
UMD075-XXX	50mm	18.3m
UMD076-XXX	100mm	18.3m
UMD077-XXX	150mm	18.3m
UMD078-XXX	200mm	18.3m
UMD085-XXX	30mm SafeLine Angle	18.3m
UMD086-XXX	25mm (Aluminium Backing)	18.3m
SNCT50-XXX-DAL	50mm (Aluminium Backing)	18.3m
SNCT100-XXX-DAL	100mm (Aluminium Backing)	18.3m

SUREGRIP™ GALVANISED METAL

CODE	MODEL	SLIP RATING	INSERTW
SNCAA-50x900-XXX	Tread 50mm	P5	Carborundum
SNCAA-75x900-XXX	Tread 75mm	P5	Egress
SNCAA-100x900-XXX	Tread 100mm	P5	Rubber - Fine line
SNCAA-50x1200-XXX	Tread 50mm	P5	Rubber - Ridge
SNCAA-75x1200-XXX	Tread 75mm	P5	Carborundum
SNCAA-100x1200-XXX	Tread 100mm	P5	Egress
SNCAA-WxHxL-XXX	Custom Tread	P5	Rubber - Fine Line
CMSP-WxL-XXX	Custom Plate	P5	Rubber - Ridge

SUREGRIP™ FIBREGLASS - F SERIES

CODE	MODEL	SLIP RATING	INSERT
SNFAA-50x900-XXX	Tread 50mm	P5	Carborundum
SNFAA-75x900-XXX	Tread 75mm	P5	Egress
SNFAA-100x900-XXX	Tread 100mm	P5	Rubber - Fine line
SNFAA-50x1200-XXX	Tread 50mm	P5	Rubber - Ridge
SNFAA-75x1200-XXX	Tread 75mm	P5	Carborundum
SNFAA-100x1200-XXX	Tread 100mm	P5	Egress
SNFAA-WxHxL-XXX	Custom Tread	P5	Rubber - Fine Line
CMFP-WxL-XXX	Custom Plate	P5	Rubber - Ridge

HIGHLIGHT® FOURBAR

CODE	MODEL	COLOUR	INSERT
UMD20A-SNCI-XXX	FourBar Surface	P5	Natural Silver
UMD21A-SNCI-XXX	"	P5	Black
UMD22A-SNCI-XXX	FourBar Recessed	P5	Natural Silver
UMD23A-SNCI-XXX	"	P5	Black



PRO STEP CLASSIC®

CODE	MODEL	SLIP RATING	INSERT
UM001-SNCI-XXX	A Series Recessed (10mm)	P5	Carborundum
UM001-SNCI-PL-XXX	A Series Recessed (10mm)	P5	Egress
UM001-SNPI-RIP-XXX	A Series Recessed (10mm)	P4	Rubber - Fine Line
UM001-SNPI-ART-XXX	A Series Recessed (10mm)	P4	Rubber - Ridge
UM002A-SNCI-XXX	A Series (10mm)	P5	Carborundum
UM002A-SNCI-PL-XXX	A Series (10mm)	P5	Egress
UM002A-SNPI-RIP-XXX	A Series (10mm)	P4	Rubber - Fine Line
UM002A-SNPI-ART-XXX	A Series (10mm)	P4	Rubber - Ridge
UM002-SNCI-XXX	Standard (25mm)	P5	Carborundum
UM002-SNCI-PL-XXX	Standard (25mm)	P5	Egress
UM002-SNPI-RIP-XXX	Standard (25mm)	P4	Rubber - Fine Line
UM002-SNPI-ART-XXX	Standard (25mm)	P4	Rubber - Ridge

PRO STEP TWIN®

CODE	MODEL	SLIP RATING	INSERT
UM004A-SNCI-XXX	A Series (10mm)	P5	Carborundum
UM004A-SNCI-PL-XXX	A Series (10mm)	P5	Egress
UM004A-SNPI-RIP-XXX	A Series (10mm)	P4	Rubber - Fine Line
UM004A-SNPI-ART-XXX	A Series (10mm)	P4	Rubber - Ridge
UM004-SNCI-XXX	Standard (25mm)	P5	Carborundum
UM004-SNCI-PL-XXX	Standard (25mm)	P5	Egress
UM004-SNPI-RIP-XXX	Standard (25mm)	P4	Rubber - Fine
UM004-SNPI-ART-XXX	Standard (25mm)	P4	Rubber - Ridge

PRO STEP SQUARE®

CODE	MODEL	SLIP RATING	INSERT
UM009A-SNCI-XXX	A Series (10mm)	P5	Carborundum
UM009A-SNCI-PL-XXX	A Series (10mm)	P5	Egress
UM009A-SNPI-RIP-XXX	A Series (10mm)	P4	Rubber - Fine Line
UM009A-SNPI-ART-XXX	A Series (10mm)	P4	Rubber - Ridge
UM009-SNCI-XXX	Standard (25mm)	P5	Carborundum
UM009-SNCI-PL-XXX	Standard (25mm)	P5	Egress
UM009-SNPI-RIP-XXX	Standard (25mm)	P4	Rubber - Fine Line
UM009-SNPI-ART-XXX	Standard (25mm)	P4	Rubber - Ridge
UM009A-160/UMD030	A Series (10mm) (Black)	P5	Silver Aluminium
UM009A-160/UMD032	A Series (10mm) (Black)	P5	Black Anodised
UM009/UMD030	A Series (10mm) (Silver)	P4	Silver Aluminium
UM009/UMD032	A Series (10mm) (Silver)	P4	Black Anodised
UM009A-SNCT-XXX	A Series (10mm)	P5	Carborundum Tape
UM009-SNCT-XXX	Standard (25mm)	P5	Carborundum Tape

POSITREAD® GROOVE

CODE	TYPE	CLASS	FINISH
UMD058	Channel Angle	P4	Black
UMD053	Channel Tread	P4	Black
UMD055	Channel Angle	P4	Silver
UMD054	Channel Tread	P4	Silver

POSITREAD® RIDGE

CODE	TYPE	CLASS	FINISH
UMD041	Ridge Angle	P5	Black
UMD040	Ridge Tread	P5	Black
UMD065	Ridge Angle	P4	Black Brushed
UMD045	Ridge Tread	P4	Black Brushed
UMD060	Ridge Angle	P5	Silver
UMD042	Ridge Tread	P5	Silver

POSITREADS® CHANNEL

CODE	TYPE	CLASS	FINISH
UMD038	Channel Angle	P4	Black
UMD035	Channel Tread	P4	Black
UMD039	Channel Angle	P4	Black Brushed
UMD033	Channel Tread	P4	Black Brushed
UMD036	Channel Angle	P4	Silver
UMD034	Channel Tread	P4	Silver

POSITREAD® FINE LINE

CODE	TYPE	CLASS	FINISH
UMD052	FineLine Angle	P4	Black
UMD032	FineLine Tread	P4	Black
UMD050	FineLine Angle	P4	Silver
UMD030	FineLine Tread	P4	Silver
UMD051	FineLine Angle	P4	Brass
UMD031	FineLine Tread	P4	Brass

COAT HANGER MULTI-BAY BIKE RACK

CODE	MODEL	WIDTH	WEIGHT	DEPTH	HEIGHT
BR2CH001-PCS	2 BAY	770mm	13.8kg	725mm	840mm
BR3CH001-PCS	3 BAY	1040mm	15.8kg	725mm	840mm
BR4CH001-PCS	4 BAY	1260mm	17.5kg	725mm	840mm
BRCH002-PCS	7 BAY	2010mm	24.2kg	725mm	840mm

CLASSIC INVERTED U

CODE	MODEL	WIDTH	WEIGHT	HEIGHT
BR2CH001-PCS	Stainless Steel	850mm	5.5kg	800mm
BRUA002-PCS	Powder Coated	850mm	5.5kg	800mm

HOLD RAIL

CODE	MODEL	WIDTH	WEIGHT	HEIGHT
BRS002-HR	Stainless Steel	1200mm	6.6kg	1000mm

CANTILEVERED MULTI-BAY BIKE RACK

CODE	MODEL	WIDTH	DEPTH	HEIGHT
BRCLMB002	Powder coated galvanised steel	1600mm	1100mm	910mm

WALL MOUNTED

CODE	MODEL	WIDTH	WEIGHT	HEIGHT	DEPTH
BR2CH001-PCS	Single Option	610mm	3.0kg	720mm	170mm
BRW003-SS	Double Option	610mm	3.8kg	800mm	400mm

HORIZONTAL WALL MOUNTED

CODE	MODEL	WIDTH	DEPTH	HEIGHT
BRW002	Wall Mounted	340mm	560mm	460mm

DUAL FREE STANDING

CODE	MODEL	HEIGHT
BRDFS001-PCS	Powder coated galvanised steel	2100mm

SKATEBOARD DETERRENTS

CODE	MODEL	WIDTH	WEIGHT	DEPTH	HEIGHT
CPSBDLS20-002-SS	SQUARE NOSED	122mm	0kg	16mm	40mm
CPSBDLR20-002-SS	BULL NOSED	120mm	0kg	16mm	25mm
CPSBDLOB20-002-SS	RECTANGLE	110mm	0kg	13mm	13mm
CPSBDF50-50	FIN - 50X50	50mm	0kg	5mm	50mm
CPSBDF100-100	FIN - 50X50	100mm		5mm	100mm
CPSBDF100-150	FIN - 100X150	150mm		5mm	100mm
CPSBDR20-002-SS	SMALL DOME	20mm		10mm	
CPSBDC20-002-SS	SMALL CYLINDRICAL	20mm		10mm	
CPSBDC40-002-SS	LARGE CYLINDRICAL	40mm		15mm	

BOLLARDS

CODE	FINISH	HEIGHT	STYLE	DIA
CPGA001-900	Galvanised Steel	900mm	Base Plate	90
CPGA001-1200	Galvanised Steel	1200 mm	Base Plate	90
CPGBA002-1200	Galvanised Steel	1200 (900+300) mm	In Ground	90
CPGBA002-1500	Galvanised Steel	1500 (1200+300)	In Ground	90
CPGBB001-900	Galvanised Steel	900	Base Plate	140
CPGBB001-1200	Galvanised Steel	2500	Base Plate	140
CPGBB001-1500	Galvanised Steel	1500	Base Plate	140
CPGBB002-1200	Galvanised Steel	1200 (900+300)	In Ground	140
CPGBB002-1500	Galvanised Steel	1500 (900+300)	In Ground	140
CPPBA001-900	Powder Coated	900	Base Plate	90
CPPBA001-1200	Powder Coated	1200	Base Plate	90
CPPBA002-1200	Powder Coated	1200 (900+300) mm	In Ground	90
CPPBA002-1500	Powder Coated	1500 (1200+300)	In Ground	90
CPPBB001-900	Powder Coated	900	Base Plate	140
CPPBB001-1200	Powder Coated	1200	Base Plate	140
CPPBB002-1200	Powder Coated	1200 (900+300)	In Ground	140
CPPBB002-1500	Powder Coated	1500 (1200+300)	In Ground	140
CPSBA001-950	Stainless Steel	950	Base Plate	100
CPSBB001-1200	Stainless Steel	1200	Base Plate	140

WHEEL STOPS

CODE	MODEL	LENGTH	COLOUR	WEIGHT
CPWS-160-1650	WHEEL STOPS	1650mm	Black	15.00kg
CPWS-135-1650	WHEEL STOPS	1650mm	Blue	15.00kg
CPWS-108-1650	WHEEL STOPS	1650mm	Ivory	15.00kg
CPWS-112-1650	WHEEL STOPS	1650mm	Yellow	15.00kg

COAT HANGER MULTI-BAY BIKE RACK

CODE	MODEL	WIDTH	WEIGHT	DEPTH	HEIGHT
BR2CH001-PCS	2 BAY	770mm	13.8kg	725mm	840mm
BR3CH001-PCS	3 BAY	1040mm	15.8kg	725mm	840mm
BR4CH001-PCS	4 BAY	1260mm	17.5kg	725mm	840mm
BRCH002-PCS	7 BAY	2010mm	24.2kg	725mm	840mm

CANTILEVERED MULTI-BAY BIKE RACK

CODE	MODEL	WIDTH	DEPTH	HEIGHT
BRCLMB002	Powder coated galvanised steel	1600mm	1100mm	910mm

HORIZONTAL WALL MOUNTED

CODE	MODEL	WIDTH	DEPTH	HEIGHT
BRW002	Wall Mounted	340mm	560mm	460mm

DUAL FREE STANDING

CODE	MODEL	HEIGHT
BRDFS001-PCS	Powder coated galvanised steel	2100mm

CLASSIC INVERTED U

CODE	MODEL	WIDTH	WEIGHT	HEIGHT
BR2CH001-PCS	Stainless Steel	850mm	5.5kg	800mm
BRUA002-PCS	Powder Coated	850mm	5.5kg	800mm

WALL MOUNTED

CODE	MODEL	WIDTH	WEIGHT	HEIGHT	DEPTH
BR2CH001-PCS	Single Option	610mm	3.0kg	720mm	170mm
BRW003-SS	Double Option	610mm	3.8kg	800mm	400mm

HOLD RAIL

CODE	MODEL	WIDTH	WEIGHT	HEIGHT
BRS002-HR	Stainless Steel	1200mm	6.6kg	1000mm



DIAMONDGRIP GRAB BARS

CODE	MODEL	MATERIAL	WIDTH	HEIGHT	DEPTH
GRS300	Grab Rail	Stainless Steel	300mm		
GRS600	Grab Rail	Stainless Steel	600mm		
GRSR-R	Shower Grab Rail GRSR-Right	Stainless Steel	650mm	1100mm	
GRSR-L	Shower Grab Rail GRSR-Left	Stainless Steel	650mm	1100mm	
GRSRE-R	Shower Grab Rail Ext GRSRE-Righ	Stainless Steel	800/800mm	1100mm	
GRSRE-L	Shower Grab Rail Ext GRSRE-Left		800/800mm	1100mm	
GRWCBR	Back Rest GRWCBR	Stainless Steel	380mm	220mm	335mm
GRWC-L	Toilet Grab Rail GRWC-Left	Stainless Steel	850mm	700mm	
GRWC-R	Toilet Grab Rail GRWC-Right	Stainless Steel	850mm	700mm	
GRWCR-L	Toilet Grab Rail Ext GRWCR-Left	Stainless Steel	1100/900mm	700mm	
GRWCR-R	Toilet Grab Rail Ext GRWCR-Right	Stainless Steel			
GRSR SEAT	Shower Seat-GRSR Sea	Stainless Steel			
GRSR ROSE	Hand Held Shower Rose-GRSR Rose	Stainless Steel			

DIAMONDGRIP® HANDRAIL SYSTEM

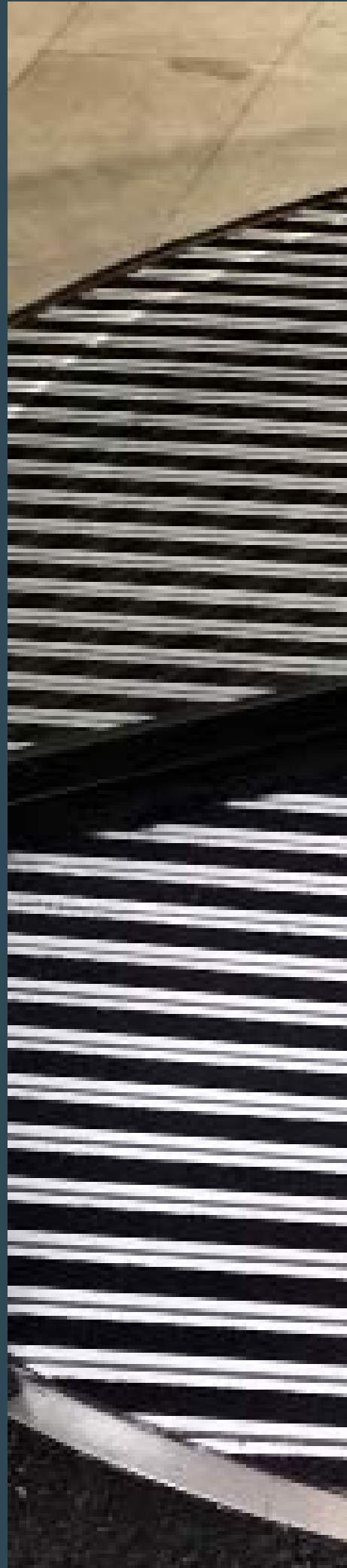
CODE	MODEL	MATERIAL	WIDTH	DEPTH
	POSTS:	Stainless Steel	300mm	
DGHR-MP	Mid-section Post	Stainless Steel	3000mm	42mm
DGHR-CP	Corner Post	Stainless Steel	3000mm	42mm
DGHR-EP	End Post	Stainless Steel	3000mm	42mm
DGHR-SP	Adjustable Post-Stair	Stainless Steel	3000mm	42mm
	HANDRAIL	Stainless Steel		
DGHR-TR x length	Top Rail Tube	Stainless Steel		
	FITTINGS	Stainless Steel		
DGHR-ACP	Corner piece	Stainless Steel		
DGHR-AEP	Free End Piece	Stainless Steel		
DGHR-AWP	Wall End Piece	Stainless Steel		
DGHR-ATREP	Top Rail Extension	Stainless Steel	3000mm	
DGHR-ASS	WIRE		x length	
	WALL MOUNT FITTINGS:	Stainless Steel		
DGHR-AHB	Handrail bracket	Stainless Steel		
DGHR-AEP	Free End Piece	Stainless Steel		
DGHR-TBS	Turnbuckle Small	Stainless Steel		
DGHR-TBL	Turnbuckle Large	Stainless Steel		
DGHR-FLU	Flexible Union	Stainless Steel		



BRAILLE SIGNS

CODE	SIGN NAME	SIZE
CTA01	Female Toilet	230 x 190 x 1.6 00mm
CTA02	Male Toilet	230 x 190 x 1.6 00mm
CTA03	Unisex Toilet	230 x 190 x 1.6 00mm
CTA09	Female Change Room	230 x 190 x 1.6 00mm
CTA10	Male Change Room	230 x 190 x 1.6 00mm
CTA42	Unisex Staff Toilet	230 x 190 x 1.6 00mm
CTA52	Female Ambulant Toilet	230 x 190 x 1.6 00mm
CTA53	Male Ambulant Toilet	230 x 190 x 1.6 00mm
CTA54	Unisex Ambulant Toilet	230 x 190 x 1.6 00mm
CTA65	Female Toilet and Shower	230 x 190 x 1.6 00mm
CTA64	Male Toilet and Shower	230 x 190 x 1.6 00mm
CTA98	Unisex Toilet and Shower	230 x 190 x 1.6 00mm
CTA37-AC	Accessible Wheel Chair	230 x 190 x 1.6 00mm
CTA37-AL	Accessible Wheel Chair	230 x 190 x 1.6 00mm
CTA37-AL	Accessible Wheel Chair	230 x 190 x 1.6 00mm





STEP RIGHT ENTRANCE COLOUR MATTING

CODE	MODEL	RUBBER COLOUR	CARPET COLOUR	WIDTH	DEPTH
UM005SR-X-158	Rubber/ Silver	Red/Grey/Black	Fire Red	(900, 1200, 1800, 2700, 3600)	1200mm
	Rubber/ Silver	Red/Grey/Black	Fire Red	(900, 1200, 1800, 2700, 3600)	1800mm
	Rubber/ Silver	Red/Grey/Black	Ocean Blue	(900, 1200, 1800, 2700, 3600)	1200mm
	Rubber/ Silver	Red/Grey/Black	Ocean Blue	(900, 1200, 1800, 2700, 3600)	1800mm
	Rubber/ Silver	Red/Grey/Black	Grey	(900, 1200, 1800, 2700, 3600)	1200mm
	Rubber/ Silver	Red/Grey/Black	Grey	(900, 1200, 1800, 2700, 3600)	1800mm
	Rubber/ Silver	Red/Grey/Black	Black	(900, 1200, 1800, 2700, 3600)	1200mm
	Rubber/ Silver	Red/Grey/Black	Black	(900, 1200, 1800, 2700, 3600)	1800mm
	Rubber/ Silver	Red/Grey/Black	Aqua Teal	(900, 1200, 1800, 2700, 3600)	1200mm
	Rubber/ Silver	Red/Grey/Black	Aqua Teal	(900, 1200, 1800, 2700, 3600)	1800mm
	Rubber/ Silver	Red/Grey/Black	Golden Sands	(900, 1200, 1800, 2700, 3600)	1200mm
	Rubber/ Silver	Red/Grey/Black	Golden Sands	(900, 1200, 1800, 2700, 3600)	1800mm

CTA GROUP Strength in Partnership

Call **1300 282 282** to request your copy of the CTA product catalogue containing the full range of AS1428 compliance products

VICTORIA - Head Office

67-71 Logistics Street, Keilor Park, VIC 3042
P 1300 282 282 F 1300 282 329

NEW SOUTH WALES

Unit 23, 43-51 College Street, Gladesville, NSW 2111
P 1300 282 679 F 1300 282 329

QUEENSLAND

Unit 12, 300 Cullen Avenue, East Eagle Farm, QLD 4007
P 1300 282 753 F 1300 282 329

WESTERN AUSTRALIA

1/3 Blackly Row, Cockburn Central, WA 6164
P 1300 282 282 F 1300 282 329 300 282 282

WWW.CTAGROUP.COM.AU



